

ROCKETPORT® INFINITY AND EXPRESS 16-Port Rackmount Interface

Part Number: 30055-7

ROCKETPORT

KEY FEATURES AND BENEFITS

- Compatible with RocketPort INFINITY and EXPRESS
16-Port Serial Cards
- Standard 1U 19" Rackmounting
- RS-232/422/485 Software-Selectable Ports
- Communications Speeds up to 460Kbps
- RoHS2 compliant under CE



PRODUCT DESCRIPTION

Flexible, reliable and high-speed multiport serial expansion. The next generation RocketPort 16-Port Rackmount Interface delivers 16 RJ45 connections that can be configured for RS-232, RS-422 or RS-485 serial communications and mounts in a standard 1U 19" IT equipment rack. This product is only suitable for use with the

RocketPort INFINITY PCI-X and RocketPort EXPRESS PCIe products and is not compatible with previous RocketPort ISA, PCI, or uPCI products.



ROCKETPORT SPECIFICATIONS

HARDWARE

Dimensions	16.75" x 1.75" x 8"
Product Weight	89.3 oz
Packaged Shipping Weight	89.92 oz
Enclosure	Black Finished Steel

ELECTRICAL SPECIFICATIONS

Surge Protection	15KV @200A for 1ns
-------------------------	--------------------

ENVIRONMENTAL SPECIFICATIONS

Air Temperature	
System On	0° to 60°C
System Off	-20° to 85°C
Operating Humidity	5% to 95%
Altitude	0 to 10,000 feet
Mean time between failures (MTBF)	61.3 years

SERIAL COMMUNICATIONS

Port Communication	(16) RJ45F
Software Interfaces	RS-232/422/485
Baud Rate	300bps-460.8Kbps

DEVICE DRIVERS

(Determined by RocketPort Card)

FreeBSD 5
FreeBSD 6
QNX® 6.X
SCO OpenServer™ 5
SCO OpenServer™ 6
Linux
Microsoft® Windows® 7
Microsoft® Windows® 2008 Server
Microsoft® Windows® Vista
Microsoft® Windows Server® 2003
Microsoft® Windows® XP
Microsoft® Windows NT® 4.0 (Legacy)
Microsoft® Windows® 2000 (Legacy)

FEATURES

RoHS 2 compliant under CE
Rugged metal housing
Easy Setup
5 Year Warranty

REGULATORY APPROVALS

Emissions

Canadian EMC Requirements ICES-003
European Standard EN55022
FCC Part 15 Subpart B: Class A limit
AS/NZS CISPR 22

Immunity

European Standard EN55024
IEC 1000-4-2/EN61000-4-2: ESD
IEC 1000-4-3/EN61000-4-3: RF
IEC 1000-4-4/EN61000-4-4: Fast Transient
IEC 1000-4-5/EN61000-4-5: Surge
IEC 1000-4-6/EN61000-4-6: Conducted Disturbance
IEC 1000-4-8/EN61000-4-8: Magnetic Field
IEC 1000-4-11/EN61000-4-11: Dip and Voltage

Safety

IEC 60950/EN60950 (LISTED)
CSA C22.2 No. 60950/UL60950 Third Edition

Other

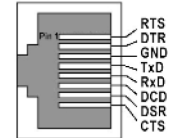
RoHS2 Compliant

Regulatory Approvals



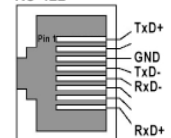
PINOUTS

RS-232



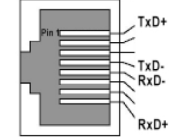
RJ45

RS-422



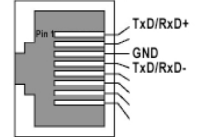
RJ45

RS-485 Full Duplex

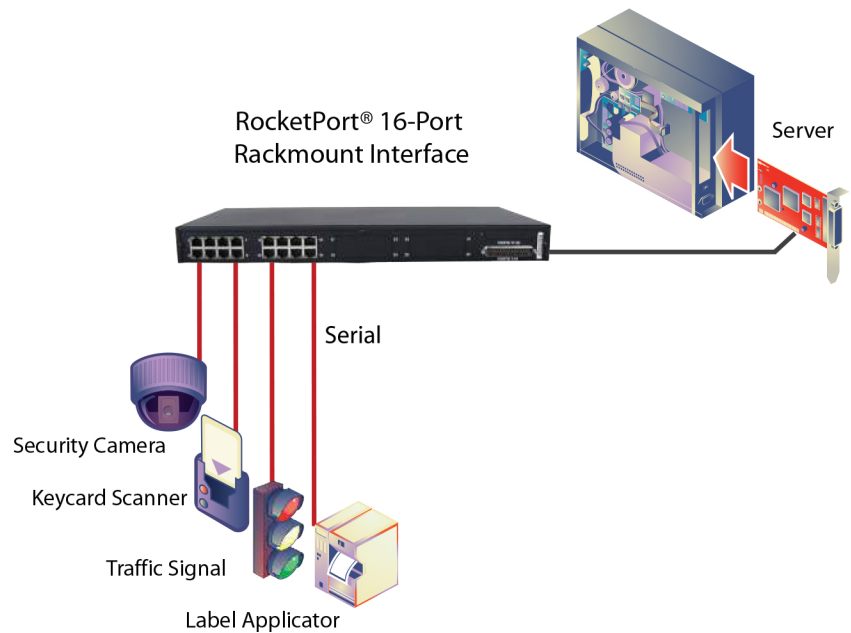


RJ45

RS-485 Half Duplex



RJ45



Warranty Information

Control offers a 30-day satisfaction guarantee and 5-year limited warranty.

Sales Support

+1.763.957.6000
sales@control.com

Technical Support

+1.763.957.6000
www.control.com/support

Email, FTP, and Web Support

info@control.com
ftp.control.com
www.control.com