

Serial Device Server

ICDM-RX/TCP-16DB9/RJ45-RM



- Web-based configuration
- RS-232/422/485 software selectable interfaces
- NEMA TS2 Certified
- TCP/IP & UDP Socket Services
- Device drivers (Windows and Linux)
- Rack mount with DB9 serial connectors

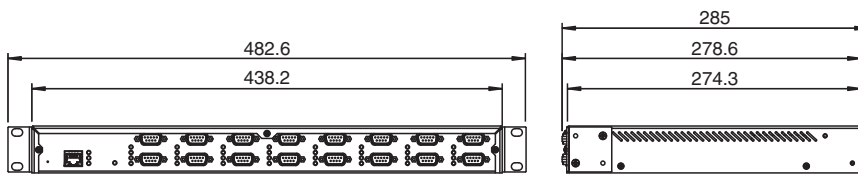
Device Server 16-port rack mount DB9



Function

The ICDM-RX/TCP product family enables the connection of serial devices (RS-232 / RS-422 / RS-485) using a device driver (Windows or Linux) or Ethernet TCP/IP devices using socket services to an industrial Ethernet network. The integrated webserver enables complete configuration of all module parameters like serial interface, baud rate, parity, data bits, stop bits, or flow control. Products are available in different versions for DB9 or screw terminal connection.

Dimensions



UNIT HEIGHT = 43.7

Technical Data

General specifications			
UL File Number	E185802		
Functional safety related parameters			
MTBF	15.5 a		
Indicators/operating means			
LED indication	see manual		
Electrical specifications			
Rated operating voltage	U _e	90 ... 260 V AC	
Interface			
Interface type	Software selectable interfaces: RS-232 , RS-422 , RS-485 (2 and 4-wire)		
Physical	16 x DB9		
Protocol	Raw serial		
Supported baud rates	300 bps to 230Kbps		
Interface 1			
Interface type	Industrial Ethernet		
Physical	1 x RJ45		
Protocol	TCP/IP		
Additional protocols	ARP, BOOTP, DHCP/RARP, HTTP, HTTPS, SSH, SSL/TLS, ICMP, RFC 1006 (ISO over TCP), SNMP (MIB-II), TCP/IP & UDP socket services, Telnet, and TFTP, and supports IP multicast data transmission		

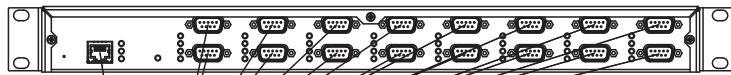
Release date: 2021-06-16 Date of issue: 2021-06-16 Filename: 70114049_eng.pdf

Refer to "General Notes Relating to Pepperl+Fuchs Product Information".

Technical Data

Transfer rate	10/100 Mbps
Directive conformity	
Electromagnetic compatibility	
Directive 2014/30/EU	EN 55024 , EN 55032
Standard conformity	
Electrical safety	EN 62368-1:2014-08
Emitted interference	EN 55032, FCC Part 15 Subpart B, ICES-003, AS/NZS CISPR 32
Noise immunity	EN 55024
Ambient conditions	
Ambient temperature	-40 ... 75 °C (-40 ... 167 °F)
Storage temperature	-40 ... 85 °C (-40 ... 185 °F)
Relative humidity	max. 95 %
Altitude	0 ... 3048 m
Mechanical specifications	
Housing length	438.2 mm
Housing width	275.3 mm
Housing height	44.2 mm
Degree of protection	IP20
Connection	Internal power supply: US and EURO cords Fieldbus: 1 x RJ45 Inputs/outputs: 16 x DB9
Material	
Housing	steel, black coated
Mass	2.9kg
Construction type	Cabinet module
Mounting	Rack mount

Wiring Diagram

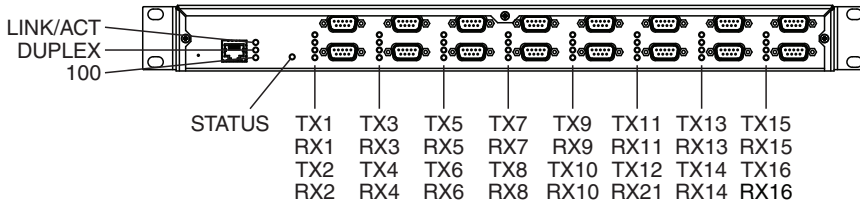


DB9 Connectors		
RS-232	RS-422/RS-485 Full Duplex	RS-485 Half Duplex
1 = DCD	1 = n.c.	1 = n.c.
2 = RxD	2 = RxD-	2 = n.c.
3 = TxD	3 = TxD-	3 = TRxD-
4 = DTR	4 = n.c.	4 = n.c.
5 = GND	5 = GND	5 = GND
6 = DSR	6 = n.c.	6 = n.c.
7 = RTS	7 = TxD+	7 = TRxD+
8 = CTS	8 = RxD+	8 = n.c.
9 = RI	9 = n.c.	9 = n.c.








Ethernet	
1 = Tx+	5 = n.c.
2 = Tx-	6 = Rx-
3 = Rx+	7 = n.c.
4 = n.c.	8 = n.c.

Release date: 2021-06-16 Date of issue: 2021-06-16 Filename: 70114049_eng.pdf

Assembly



Accessories

	V45-G-C5-GN1M-PUR-E1S	Ethernet bus cable male cordset single-ended RJ45, 4-pin, PUR cable green, Cat5e, shielded, UL approved, drag chain suitable
	V45-G-C5-GN3M-PUR-E1S	Ethernet bus cable male cordset single-ended RJ45, 4-pin, PUR cable green, Cat5e, shielded, UL approved, drag chain suitable
	V45-G-C5-GN10M-PUR-E1S	Ethernet bus cable male cordset single-ended RJ45, 4-pin, PUR cable green, Cat5e, shielded, UL approved, drag chain suitable
	V45-G-C5-GN1M-PUR-E1S-V45-G	Ethernet bus cable RJ45 to RJ45 PROFINET-coded, 4-pin, PUR cable green, Cat5e, shielded, UL approved, drag chain suitable
	V45-G-C5-GN3M-PUR-E1S-V45-G	Ethernet bus cable RJ45 to RJ45 PROFINET-coded, 4-pin, PUR cable green, Cat5e, shielded, UL approved, drag chain suitable
	V45-G-C5-GN10M-PUR-E1S-V45-G	Ethernet bus cable RJ45 to RJ45 PROFINET-coded, 4-pin, PUR cable green, Cat5e, shielded, UL approved, drag chain suitable
	V45-G-C5-GN20M-PUR-E1S-V45-G	Ethernet bus cable RJ45 to RJ45 PROFINET-coded, 4-pin, PUR cable green, Cat5e, shielded, UL approved, drag chain suitable