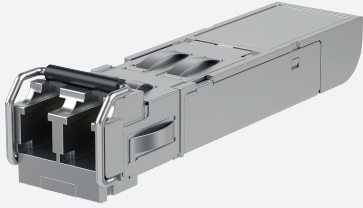


SFP: 100BASE-ZX Fast Ethernet Single-mode Fiber Extended Temperature



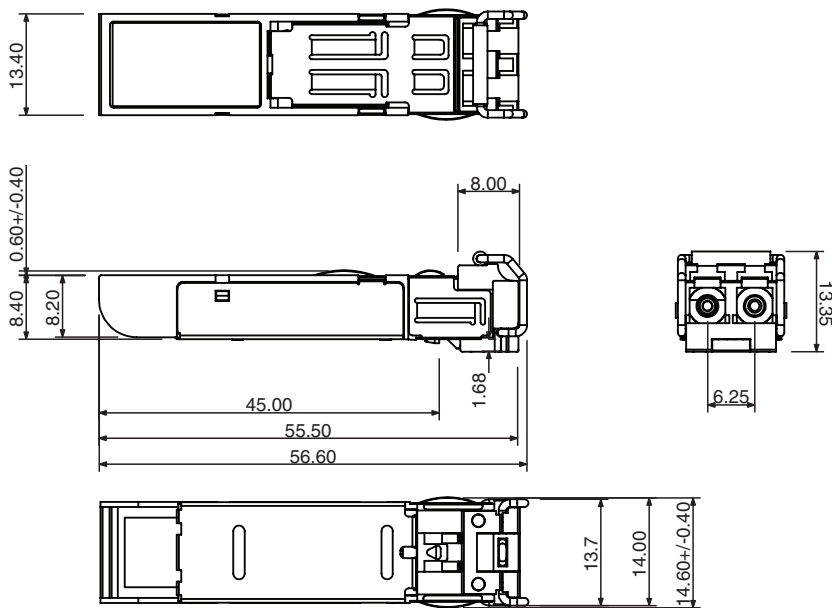
SFP-S-100KM-F-W

- Industry standard small form pluggable (SFP) package
- SFP Multi-Source Agreement compliant
- Hot pluggable
- Class 1 laser product complies with EN 60825-1
- Single power supply 3.3V
- TTL signal detect indicator
- Duplex LC connector
- Extended temperature range: -40 to 85° C

Single-mode 100KM 100BASE-ZX Fast Ethernet Fiber SFP



Dimensions



Technical Data

Ethernet Interface

Standards

IEEE802.3u 100BASE-FX yes

Interface 1

Interface type 100BASE-ZX Fast Ethernet Fiber
 Physical SFP, Hot pluggable
 Transfer rate 155 Mbps

Fiber optics functionality

Release date: 2021-06-02 Date of issue: 2021-06-02 Filename: 70116442_eng.pdf

Refer to "General Notes Relating to Pepperl+Fuchs Product Information".

Pepperl+Fuchs Group
www.pepperl-fuchs.com

USA: +1 330 486 0001
fa-info@us.pepperl-fuchs.com

Germany: +49 621 776 1111
fa-info@de.pepperl-fuchs.com

Singapore: +65 6779 9091
fa-info@sg.pepperl-fuchs.com

PEPPERL+FUCHS

Technical Data

| | |
|----------------------------------|--|
| Wave length | 1550 nm |
| Cable type | 9/125µm Single-mode |
| Cable length | max. 100 km |
| Connector type | 1 Duplex LC |
| Transmit power (optical) | -1 ... 0 dBm |
| Receive sensitivity | -35 ... 0 dBm |
| Link budget | 30 dBm |
| Directive conformity | |
| Electromagnetic compatibility | |
| Directive 2014/30/EU | EN55024, IEC 61000-4-2, IEC 61000-4-3, IEC 61000-4-4, IEC 61000-4-6, IEC 61000-4-8 |
| Standard conformity | |
| Emitted interference | CISPR 22 , FCC Part 15 Subpart B Class A , EN61000-6-4, IEC61000-6-4 |
| Noise immunity | EN 55024 |
| Standards | SFP Multi-Source (MSA) compliant Class 1 laser product complies with EN 60825-1 |
| Ambient conditions | |
| Ambient temperature | -40 ... 85 °C (-40 ... 185 °F) |
| Storage temperature | -40 ... 85 °C (-40 ... 185 °F) |
| Relative humidity | max. 95 % |
| Mechanical specifications | |
| Mass | 17 g |