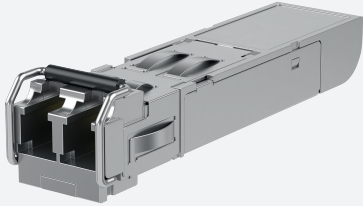


# SFP: 1000BASE-LX Gigabit Ethernet Single-mode BiDi-A Fiber Extended Temperature



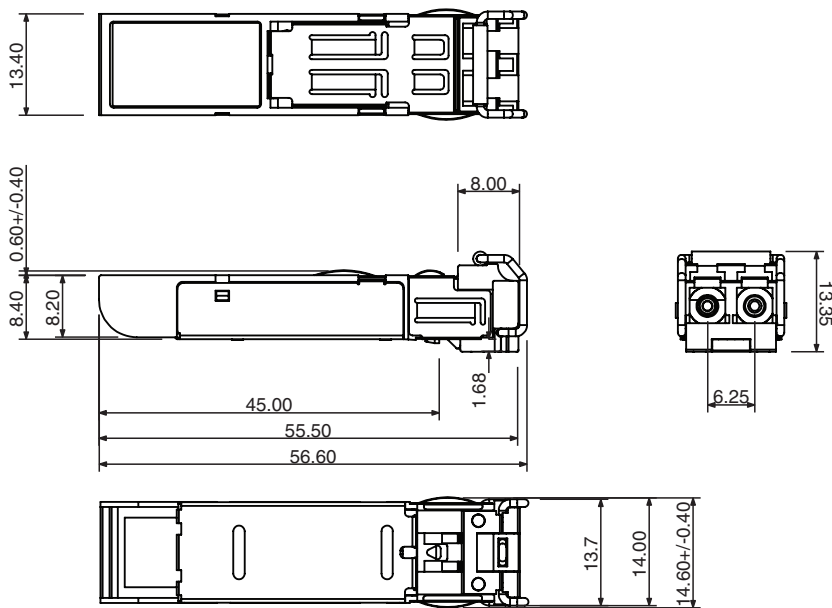
## SFP-S-10KM-G-W-BIDI-A

- Industry standard small form pluggable (SFP) package
- SFP Multi-Source Agreement compliant
- Hot pluggable
- Class 1 laser product complies with EN 60825-1
- Single power supply 3.3V
- TTL signal detect indicator
- Duplex LC connector
- Extended temperature range: -40 to 85° C

Single-mode BiDi-A 10KM 1000BASE-LX Gigabit Ethernet Fiber SFP



### Dimensions



### Technical Data

#### Ethernet Interface

##### Standards

IEEE802.3z 1000BASE-LX	yes
------------------------	-----

#### Interface 1

Interface type	1000BASE-LX Gigabit Ethernet Fiber
Physical	SFP, Hot pluggable, BiDi-A
Transfer rate	1.25 Gbps

#### Fiber optics functionality

Release date: 2021-06-02 Date of issue: 2021-06-02 Filename: 70116445\_eng.pdf

Refer to "General Notes Relating to Pepperl+Fuchs Product Information".

Pepperl+Fuchs Group  
www.pepperl-fuchs.com

USA: +1 330 486 0001  
fa-info@us.pepperl-fuchs.com

Germany: +49 621 776 1111  
fa-info@de.pepperl-fuchs.com

Singapore: +65 6779 9091  
fa-info@sg.pepperl-fuchs.com

PEPPERL+FUCHS

## Technical Data

Wave length		TX: 1310 nm RX: 1550 nm
Cable type		9/125µm Single-mode
Cable length		max. 10 km
Connector type		1 Simplex LC
Transmit power (optical)		-9 ... -3 dBm
Receive sensitivity		-21 ... -1 dBm
Link budget		12 dBm
<b>Directive conformity</b>		
Electromagnetic compatibility		
Directive 2014/30/EU		EN55024, IEC 61000-4-2, IEC 61000-4-3, IEC 61000-4-4, IEC 61000-4-6, IEC 61000-4-8
<b>Standard conformity</b>		
Emitted interference		CISPR 22 , FCC Part 15 Subpart B Class A , EN61000-6-4, IEC61000-6-4
Noise immunity		EN 55024
Standards		SFP Multi-Source (MSA) compliant Class 1 laser product complies with EN 60825-1
<b>Ambient conditions</b>		
Ambient temperature		-40 ... 85 °C (-40 ... 185 °F)
Storage temperature		-40 ... 85 °C (-40 ... 185 °F)
Relative humidity		max. 95 %
<b>Mechanical specifications</b>		
Mass		17 g