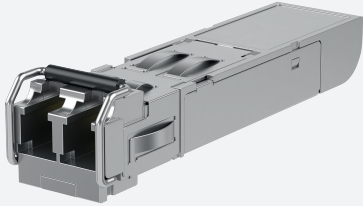


SFP: 1000BASE-LX Gigabit Ethernet Single-mode BiDi-B Fiber Extended Temperature



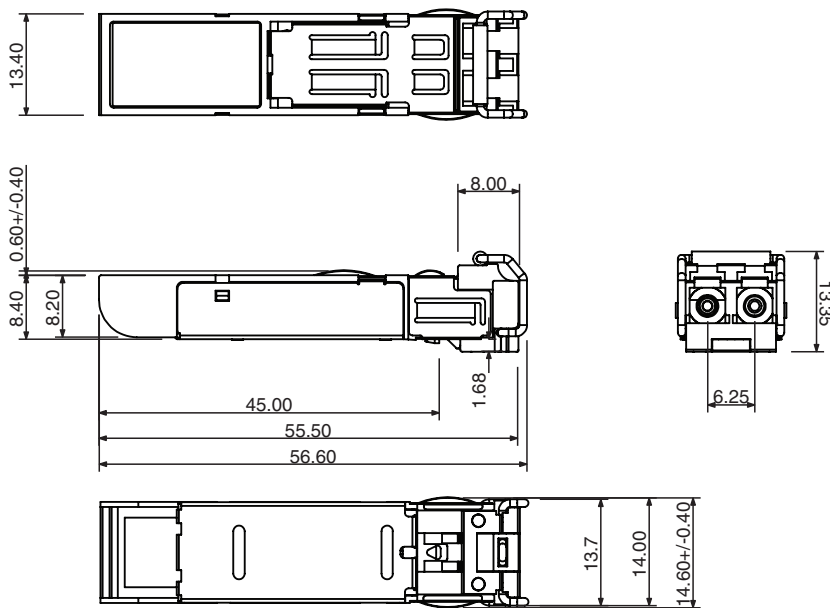
SFP-S-20KM-G-W-BIDI-B

- Industry standard small form pluggable (SFP) package
- SFP Multi-Source Agreement compliant
- Hot pluggable
- Class 1 laser product complies with EN 60825-1
- Single power supply 3.3V
- TTL signal detect indicator
- Duplex LC connector
- Extended temperature range: -40 to 85° C

Single-mode BiDi-B 20KM 1000BASE-LX Gigabit Ethernet Fiber SFP



Dimensions



Release date: 2021-06-02 Date of issue: 2021-06-02 Filename: 70116448_eng.pdf

Technical Data

Ethernet Interface

Standards

IEEE802.3z 1000BASE-LX	yes
------------------------	-----

Interface 1

Interface type	1000BASE-LX Gigabit Ethernet Fiber
Physical	SFP, Hot pluggable, BiDi-B
Transfer rate	1.25 Gbps

Fiber optics functionality

Refer to "General Notes Relating to Pepperl+Fuchs Product Information".

Technical Data

Wave length		TX: 1550 nm RX: 1310 nm
Cable type		9/125µm Single-mode
Cable length		max. 20 km
Connector type		1 Simplex LC
Transmit power (optical)		-8 ... -2 dBm
Receive sensitivity		-23 ... -1 dBm
Link budget		15 dBm
Directive conformity		
Electromagnetic compatibility		
Directive 2014/30/EU		EN55024, IEC 61000-4-2, IEC 61000-4-3, IEC 61000-4-4, IEC 61000-4-6, IEC 61000-4-8
Standard conformity		
Emitted interference		CISPR 22 , FCC Part 15 Subpart B Class A , EN61000-6-4, IEC61000-6-4
Noise immunity		EN 55024
Standards		SFP Multi-Source (MSA) compliant Class 1 laser product complies with EN 60825-1
Ambient conditions		
Ambient temperature		-40 ... 85 °C (-40 ... 185 °F)
Storage temperature		-40 ... 85 °C (-40 ... 185 °F)
Relative humidity		max. 95 %
Mechanical specifications		
Mass		17 g