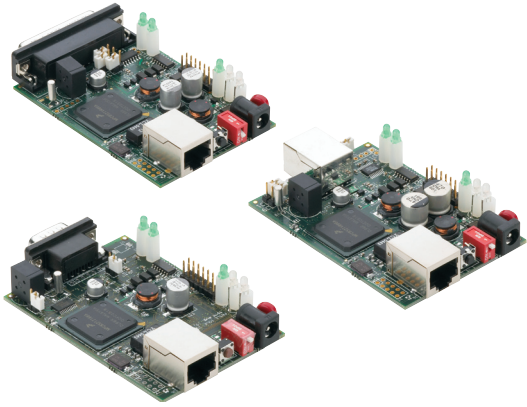


# IOLAN DS1-B

## Board Level Serial to Ethernet Servers



### Features and Benefits

- **Universal, software selectable EIA-232/422/485 interface**
- **Next Generation IP support (IPV6) for investment protection and network compatibility**
- **High performance in a space saving compact size**
- **Indicators for network and serial interfaces for easy troubleshooting**
- **DeviceManager software for centralised management and control**
- **COM or TTY port control and management for serial-based applications**
- **Power over serial cable models eliminate costs of a separate power installation**

**IOLAN DS1-B is the best choice for embedded serial to Ethernet connectivity applications. Delivering a cost effective solution in a compact size, the IOLAN DS1-B offers flexibility and advanced IP technology making it ideal for providing an Ethernet capability for serial based equipment.**

### Flexible and Reliable Serial to Ethernet Connections

The IOLAN DS1-B enables connectivity to serial-based COM port, UDP or TCP socket based applications. Perle's TruePort re-director provides fixed TTY or COM ports to server based applications enabling communication with remote devices connected to Perle device servers. You can also tunnel serial data between devices across an IP network.

Easy to set up and manage, the IOLAN DS1-B has a software selectable EIA-232/422/485 interface capability. Perle's Device Management software, better centralized control and management is provided resulting in maximum uptime for your remote equipment.

### Advanced IP Technology

The IOLAN DS1-B is the most advanced device server on the market. With support for Next Generation IP (IPV6) support, the IOLAN DS1-B provides organizations with the investment protection today to meet the compatibility needs of networks tomorrow.



## Technical Specifications

### Processor

- MPC852T, 66 Mhz, 87MIPS

### Serial Port

- software selectable EIA-232/422/485
- Full modem and hardware flow control
- 50bps to 230Kbps
- DB25M, DB25F, DB9M or RJ45 connectors
- Tx and Rx activity indicators
- Power over serial cable

### Interface Modes

- EIA-232 full duplex
- EIA-422 full duplex
- EIA-485 4 wire, full duplex
- EIA-485 2 wire, half duplex, with echo
- EIA-485 2 wire, half duplex, without echo

### Surge Protection

- 15Kv ESD protection on all signals

### Network/Ethernet

- 1 x 10/100 RJ45

### Protocols

- IPV6, IPV4, TCP/IP, CIDR, ARP, RARP, UDP, UDP Multicast, ICMP, BOOTP, DHCP, TFTP, Telnet, Raw, Reverse Telnet, RCP, http

### Management

- Web browser
- Perle DeviceManager software to manage multiple Device Servers
- CLI – Telnet, shared console port
- SNMP, MIB II, read and write

### Security and Authentication

- Local database

### Modem Support

- Full bi-directional

### Indicators

- Power/Ready
- Link status/Lan Speed
- Network Link activity
- Serial : Tx and Rx data

### Input Power Support

- 9-30V dc, 4.8 Watts

### Dimensions, Weight

- Dimension (L x W x H) 9.0 x 5.8 x 2.3 (cm), 3.5 x 2.3 x 0.9 (in)
- Weight - 0.22 kg, (0.5 lbs)

### Environmental

- Operating temperature: 0°C to 55°C, 32°F to 131°F
- Storage temperature: -40°C to 66°C, -40°F to 150°F

### Approvals

- FCC Part 15A
- CE
- CSA
- UL 1950
- EN 55022 Class A
- EN 60950

### TruePort

Fixed TTY/COM port emulation software.

- Microsoft Windows® Server 2003, XP, 2000, NT
- Linux
- Solaris
- AIX
- SCO UnixWare
- SCO OpenServer
- NCR
- HP UX

### Warranty

- 2 year limited warranty

Model	Features					Part Number		
	Ethernet	Serial Ports	Interface Type	Serial Connector	Power From Serial	USA	Europe	UK
IOLAN DS1-B	10/100	1	EIA-232/422/485	DB25M	•	04030510	04030510	04030510
IOLAN DS1-B	10/100	1	EIA-232/422/485	RJ45	•	04030500	04030500	04030500
IOLAN DS1-B	10/100	1	EIA-232/422/485	DB25F	•	04030520	04030520	04030520
IOLAN DS1-B	10/100	1	EIA-232/422/485	DB9M		04030530	04030530	04030530



[www.perle.com](http://www.perle.com)

Perle products are constantly reviewed and updated to meet customers' needs, as such specifications and capabilities are subject to change without notice. We endeavor to keep product descriptions as current as possible; for the latest up-to-date information, please visit our web site at [www.perle.com](http://www.perle.com). Perle is a registered trademark of Perle Systems. All other product names are trademarks of their respective holders. Copyright©Perle.