

## Product Accessories

ROCKETLINX

### POWER OVER ETHERNET SPLITTER | 24VDC, 24W

Part Number: 1200054

- Supports High Power over 2-pairs - up to 30W input
- High power from data or spare pairs of Ethernet line
- 10/100/1000 BASE-T Support (Gig)
- Safe & reliable power over existing Ethernet infrastructure
- IEEE 802.3at pre-standard
- IEEE 802.3af Compliant with higher power



### LC-ST FIBER ADAPTER CABLE | Single-Mode and Multi-Mode

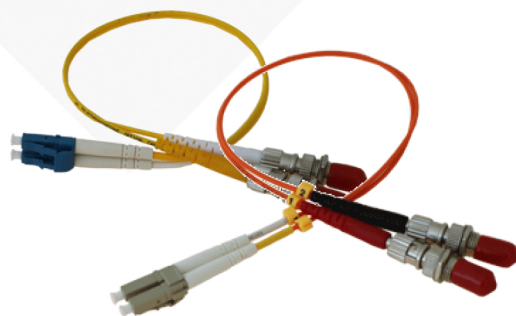
Part Number: Single-Mode 1200056 | Multi-Mode 1200055

Length - 1 Foot

Connectors - LC Male/ ST Female

Cable Type - 9/125um (Single-Mode), 62.5/125um (Multi-Mode)

Duplex - Yes



### LC-SC FIBER ADAPTER CABLE | Single-Mode and Multi-Mode

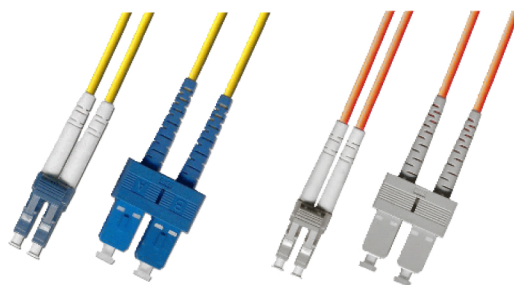
Part Number: Single-Mode 1200090 | Multi-Mode 1200089

Length - 1 Foot

Connectors - LC Male/ SC Male

Cable Type - 9/125um (Single-Mode), 62.5/125um (Multi-Mode)

Duplex - Yes



Warranty Information  
Control offers a 30-day  
satisfaction guarantee and  
5-year limited warranty.

Sales Support  
+1.763.957.6000  
sales@control.com

Technical Support  
+1.763.957.6000  
www.control.com/  
support

Email, FTP, and Web Support  
info@control.com  
ftp.control.com  
www.control.com