



DUAL LTE / DUAL
WI-FI MOBILE
ACCESS ROUTER



DIGI TRANSPORT® WR64

High performance cellular router with dual redundant communications for complex transit and transportation systems.

Ideal for challenging transportation and mobile environments, Digi TransPort® WR64 is a dual cellular LTE-Advanced router with true enterprise class routing, security, firewall and integrated VPN. It offers a flexible interface design with an integrated Wi-Fi access point, USB, serial and 4-port Ethernet switch, as well as a variety of configuration options including GNSS and Bluetooth.

Internet access for riders is managed securely and without impact to onboard bus systems. Triple carrier aggregation on each cellular interface can be combined to deliver up to 1.2 Gbps to passengers. Onboard systems retain priority and any remaining bandwidth is made available to Internet traffic.

A captive portal and splash page enable term acceptance, targeted messaging and agency branding. Standard HTTP/DNS redirect can be used to block malware and unwanted content through popular 3rd party service providers or an agency server.

Reliable powering circuitry supporting 9-36VDC input with ignition sense for direct integration into vehicles power source. Dual cellular and Wi-Fi modules provide true segmented traffic flow of private and public data for fare collection, CAD/AVL data, camera log backhaul and passenger Wi-Fi access.

FEATURES AND BENEFITS

- Segmented private vs. public data communication across dual 600 Mbps CAT 11 cellular modules
- Video and vehicle data offload over 1.7 Gbps 802.11ac Wi-Fi backhaul
- Passenger Wi-Fi over 867 Mbps 802.11ac access point
- Wired Gigabit Ethernet (4-port) for onboard systems
- Future-built with powerful quad-core 1.91GHz, 64-bit CPU
- Manage and control devices with Digi Remote Manager®, a web-based management tool for all Digi cellular routers and gateways
- Cryptographic Co-processor with Secure Key Generation and Storage

RELATED PRODUCTS



Digi TransPort®
WR44 R



Digi TransPort®
WR44 RR

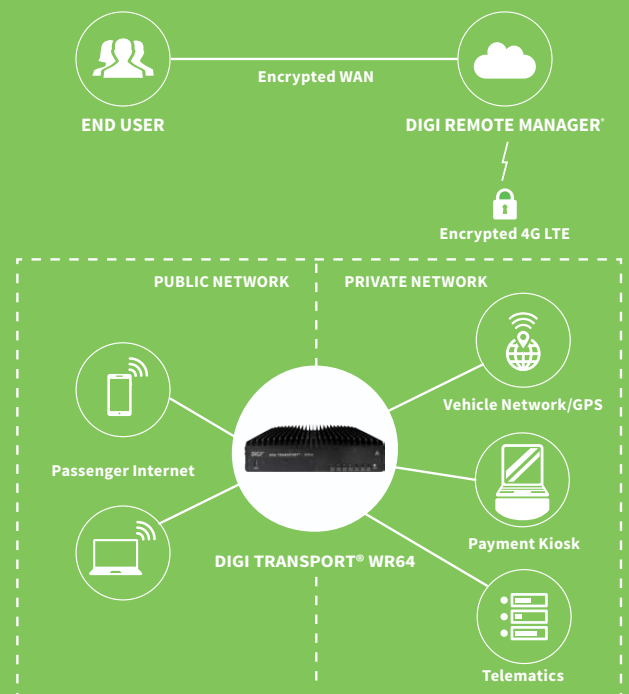


Accessories



Digi Remote
Manager®

APPLICATION EXAMPLE



SPECIFICATIONS

DIGI TRANSPORT® WR64

WIRELESS INTERFACES

WWAN*

DUAL MODULES GLOBAL LTE-ADVANCED	LTE FDD : 700(B12,B13,B17, B28, B29) / 800(B20) / 850(B5, B26) / 900(B8) / 1700AWS(B4, B66) / 1800(B3) / 1900(B2, B25) / 2100(B1) / 2300(B30) / 2600(B7) LTE TDD : 2300(B40) / 2500(B41) / 2600(B38) 3G (HSPA): 850(B5), 900(B8), 1700AWS(B4), 1800(B3), 1900(B2), 2100(B1) Transfer rate (max): 600 Mbps down, 75 Mbps up per module
---	--

CONNECTOR	2 x 50 Ω SMA per module (Center pin: female)
------------------	--

SIM SLOTS	2, Mini-SIM (2FF) per module (4 total)
------------------	--

SIM SECURITY	SIM slot cover plate included
---------------------	-------------------------------

WI-FI

DUAL MODULES	Private Backhaul: 4 x 4 MU-MIMO 5 GHz 802.11 a/n/ac Wave 2, 1.733 Gbps (max) Public Wi-Fi: 2 x 2 MIMO 2.4/5 GHz 802.11 a/b/g/n/ac, 867 Mbps (max)
---------------------	--

HOTSPOT	Captive portal, customizable splash page
----------------	--

AUTHENTICATION	Basic ToS acceptance, Enterprise RADIUS
-----------------------	---

3RD PARTY SERVICES	Content filtering, embedded advertising
---------------------------	---

USER MANAGEMENT	Per client usage limit and reporting
------------------------	--------------------------------------

MODES	Up to 4 Access Points and 1 Client per Wi-Fi module (8+2 total)
--------------	---

SECURITY	None, WPA/WPA2-Personal, WPA/WPA2-Enterprise
-----------------	--

CONNECTORS	Private Backhaul: 4 x 50 Ω RP-SMA (Center pin: male) Public Wi-Fi: 2 x 50 Ω RP-SMA (Center pin: male)
-------------------	--

GPS

TECHNOLOGY	Multi-constellation: Concurrent reception of up to 2 GNSS (GPS, Galileo, GLONASS, BeiDou)
-------------------	---

SENSITIVITY	-163 dB
--------------------	---------

PROTOCOL	NMEA 0183 V2.3 sentence output
-----------------	--------------------------------

CONNECTOR	1 x 50 Ω SMA (Center pin: female); +3.3VDC active antenna drive
------------------	---

WIRED INTERFACES

SERIAL

PORTS / CONNECTOR	1 RS-232; DB-9 male
--------------------------	---------------------

ETHERNET

PORTS / CONNECTOR	4; RJ-45
--------------------------	----------

STANDARD	IEEE 802.3; 10/100/1000 Base-T
-----------------	--------------------------------

USB

PORTS	3
--------------	---

STANDARD	USB 3.0 , Type A
-----------------	------------------

SOFTWARE

PROTOCOLS	IPv4/IPv6, DMNR, QoS, NTP, Dynamic DNS, Syslog
------------------	--

SECURITY	Stateful firewall, IPsec VPN, PKI, RADIUS, Mobile IKE, SHA-2
-----------------	--

REMOTE MANAGEMENT	Digi Remote Manager® (cloud based); SNMP v1/v2c/v3 (user installed/managed)
--------------------------	---

LOCAL MANAGEMENT	Web Interface (HTTPS); CLI (SSH, Serial port)
-------------------------	---

MANAGEMENT/ TROUBLESHOOTING	Protocol Analyzer with PCAP for Wireshark, Event and System Logging (with Syslog), accessible from Digi Remote Manager, SFTP or SCP
--	---

PROGRAMMING TOOLS/ ENVIRONMENTS	Python v3.6
--	-------------

MEMORY	2GB RAM, 8GB Flash (CFAST card)
---------------	---------------------------------

POWER

INPUT	9-36VDC, 12/24 VDCV vehicle rated, cold-crank down to 6VDC
--------------	--

DELAYED SHUTDOWN	Configurable power down following ignition off indication
-------------------------	---

ENVIRONMENTAL

PHYSICAL	10.2 in x 7.8 in x 2.6 in (260 mm x 196 mm x 67 mm)
-----------------	---

STATUS LEDS	Power, WWAN (signal, service) per module, Wi-Fi Service (per module), GNSS Service, LAN (link, activity)
--------------------	--

ENCLOSURE IP40	Aluminum alloy
-----------------------	----------------

MOUNTING	Flexible mounting options
-----------------	---------------------------

*Transfer rates are network operator dependent

SPECIFICATIONS

DIGI TRANSPORT® WR64

ENVIRONMENTAL

OPERATING TEMPERATURE	-30° C to +70° C
STORAGE TEMPERATURE	-40° C to +85° C
RELATIVE HUMIDITY	0% to 95% (non-condensing) @ 25° C

APPROVALS

CELLULAR	PTCRB, NAPRD.03, GCF-CC, R&TTE, EN 301 511
SAFETY	UL 60950/EN62368, CSA 22.2 No. 60950
EMISSIONS/IMMUNITY	CE, FCC Part 15 Class B, EN55024, EN55022 Class B
INDUSTRY	MIL-STD 810G (temperature, humidity, vibration, shock, dust) SAE J1113 / J1455, ISO 7637-2, ISO 10605

WARRANTY

PRODUCT WARRANTY	3 years
-------------------------	---------

PRODUCT IMAGES

FRONT



BACK

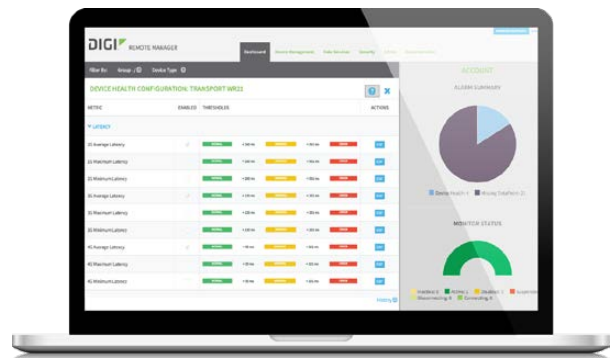


DIGI REMOTE MANAGER®

Manage and control devices from a central, secure platform.

When it comes to the Internet of Things, only the most reliable communication connections will do. With Digi Remote Manager, you can visually monitor, update and maintain the performance requirements you depend on most, with reports on the following key parameters:

- Cellular connection history
- 3G/4G LTE signal quality
- Public Wi-Fi client usage statistics
- Packet delivery
- Latency
- Cellular data sent and received
- CPU and memory utilization
- Network interface throughput
- Level 1 PCI-DSS validation
- Open APIs available to support application development



SECURITY

- Certified SSAE-16 facilities
- Over 175 security controls in place to protect data
- Security framework compliance with PCI, HIPPA, NIST and others
- Earned SkyHigh's Cloud Trust Program highest ranking of Enterprise-ready
- PCI certified; Attestation of Compliance

PART NUMBERS	DESCRIPTION
WR64-A121	TransPort WR64 - dual LTE, dual Wi-Fi, worldwide; Accessories not included

PART NUMBERS	ACCESSORIES*
76002076	TransPort WR64 AC/DC power supply; Contains AC/DC power supply and US power cord
76002069	TransPort WR64 Accessory Kit; Contains Power supply, US/EU/UK power cords, Ethernet cable, Cellular, GNSS, Wi-Fi antennas

*Sold separately, unless otherwise noted.

FOR MORE INFORMATION
PLEASE VISIT WWW.DIGI.COM

DIGI SERVICE AND SUPPORT / You can purchase with confidence knowing that Digi is always available to serve you with expert technical support and our industry leading warranty. For detailed information visit www.digi.com/support.

© 1996-2018 Digi International Inc. All rights reserved.
All trademarks are the property of their respective owners.

91004152
A2/618

DIGI INTERNATIONAL WORLDWIDE HQ
877-912-3444 / 952-912-3444 / www.digi.com

DIGI INTERNATIONAL GERMANY
+49-89-540-428-0

DIGI INTERNATIONAL JAPAN
+81-3-5428-0261 / www.digi-intl.co.jp

DIGI INTERNATIONAL SINGAPORE
+65-6213-5380

DIGI INTERNATIONAL CHINA
+86-21-50492199 / www.digi.com.cn

