

# **MGate 4101-MB-PBS Modbus Serial-to-PROFIBUS Slave Gateway User's Manual**

---

**Version 6.0, April 2020**

[www.moxa.com/product](http://www.moxa.com/product)



© 2020 Moxa Inc. All rights reserved.

# **MGate 4101-MB-PBS Modbus Serial-to-PROFIBUS Slave Gateway User's Manual**

The software described in this manual is furnished under a license agreement and may be used only in accordance with the terms of that agreement.

## **Copyright Notice**

© 2020 Moxa Inc. All rights reserved.

## **Trademarks**

The MOXA logo is a registered trademark of Moxa Inc.  
All other trademarks or registered marks in this manual belong to their respective manufacturers.

## **Disclaimer**

Information in this document is subject to change without notice and does not represent a commitment on the part of Moxa.

Moxa provides this document as is, without warranty of any kind, either expressed or implied, including, but not limited to, its particular purpose. Moxa reserves the right to make improvements and/or changes to this manual, or to the products and/or the programs described in this manual, at any time.

Information provided in this manual is intended to be accurate and reliable. However, Moxa assumes no responsibility for its use, or for any infringements on the rights of third parties that may result from its use.

This product might include unintentional technical or typographical errors. Changes are periodically made to the information herein to correct such errors, and these changes are incorporated into new editions of the publication.

## **Technical Support Contact Information**

[www.moxa.com/support](http://www.moxa.com/support)

### **Moxa Americas**

Toll-free: 1-888-669-2872  
Tel: +1-714-528-6777  
Fax: +1-714-528-6778

### **Moxa Europe**

Tel: +49-89-3 70 03 99-0  
Fax: +49-89-3 70 03 99-99

### **Moxa India**

Tel: +91-80-4172-9088  
Fax: +91-80-4132-1045

### **Moxa China (Shanghai office)**

Toll-free: 800-820-5036  
Tel: +86-21-5258-9955  
Fax: +86-21-5258-5505

### **Moxa Asia-Pacific**

Tel: +886-2-8919-1230  
Fax: +886-2-8919-1231

# Table of Contents

<b>1. Introduction</b> .....	<b>1-1</b>
Overview .....	1-2
Package Checklist .....	1-2
Product Features .....	1-2
<b>2. Getting Started</b> .....	<b>2-1</b>
Connecting Power .....	2-2
Connecting PROFIBUS Devices .....	2-2
Connecting Modbus Serial Devices .....	2-2
Connecting to a Host via Serial Console Cable .....	2-2
<b>3. Hardware</b> .....	<b>3-1</b>
Power Input and Relay Output Pinouts .....	3-2
LED Indicators.....	3-2
Dimensions.....	3-2
Pin Assignments.....	3-3
Mounting the Unit.....	3-4
Specifications.....	3-4
Adjustable Pull High/Low Resistors for the Modbus Port (P1) in RS-485 Mode.....	3-6
Reset Button .....	3-7
Rotary Switch.....	3-7
<b>4. Configuration</b> .....	<b>4-1</b>
Installing the Software .....	4-2
Starting MGate Manager .....	4-5
Connecting to the Unit.....	4-7
Modifying the Configuration .....	4-9
Configure Device.....	4-10
Configure Modbus Settings .....	4-11
Set Up PROFIBUS .....	4-12
IO Mapping Setup .....	4-13
Auto Mapping .....	4-19
QuickLink .....	4-20
Paging .....	4-22
Load Default.....	4-24
Monitoring Modbus Activity .....	4-25
Diagnose.....	4-28
Upgrading Firmware.....	4-30
Import/Export .....	4-31
Off-Line Configuration .....	4-35
<b>A. Quick Configuration</b> .....	<b>A-1</b>
Typical Applications.....	A-2
Quick Configuration Steps.....	A-3
PROFIBUS Overview.....	A-3
Modbus Overview .....	A-4
Diagnose Packet Format .....	A-6

## Introduction

---

Welcome to the MGate 4101-MB-PBS line of Modbus to PROFIBUS gateways. All models feature easy protocol conversion from Modbus to PROFIBUS, and RS-232/422/485 port for Modbus communication.

This chapter is an introduction to the MGate 4101-MB-PBS and includes the following sections:

- **Overview**
- **Package Checklist**
- **Product Features**

# Overview

The MGate 4101-MB-PBS is a line of protocol gateways that provides users with the following features:

## Protocol conversion between Modbus and PROFIBUS

MGate 4101-MB-PBS series products can be used to connect Modbus devices and PROFIBUS devices to provide PLCs (ex. Siemens S400, S300) with remote maintenance capability.

## Windows utilities for easy setup and traffic monitoring

A Windows utility is provided to make configuration and operation of the MGate 4101-MB-PBS as easy as possible. The utility uses serial console port to connect MGate 4101-MB-PBS unit. Besides, Wizard functions can help you finish configuration in only several minutes by automatic commands detection and automatic memory mapping.

# Package Checklist

All models of the MGate 4101-MB-PBS series are shipped with the following items:

## Standard Accessories:

- 1 MGate 4101-MB-PBS Modbus Serial-to-PROFIBUS Slave Gateway.
- Quick Installation Guide (printed).
- Warranty card.
- RJ45 to DB9 cable (for console use)

## Optional Accessories:

- **WK-36-02:** Wall mounting kit
- **Mini DB9F-to-TB Adaptor:** DB9 female to terminal block adapter

*Note: Notify your sales representative if any of the above items is missing or damaged.*

# Product Features

- Automatic Windows configuration utility
- Redundant dual DC power inputs
- Enhanced surge protection for serial and power
- 2 kV isolation for serial signals (-I model only)
- PROFIBUS connector to connect the gateway to the field bus
- Power-off warning by relay output
- Software-selectable RS-232/422/485 communication

# 2

## Getting Started

---

The following topics are covered in this chapter:

- ❑ **Connecting Power**
- ❑ **Connecting PROFIBUS Devices**
- ❑ **Connecting Modbus Serial Devices**
- ❑ **Connecting to a Host via Serial Console Cable**

## Connecting Power

The unit can be powered using the AC adaptor or by connecting a power source to the terminal block, depending on the model. The following instructions are for the AC adaptor:

1. Plug the connector of the power adapter into the DC-IN jack on the back of the unit.
2. Plug the power adapter into an electrical outlet.

Follow these instructions to connect a power source to the terminal block:

1. Loosen or remove the screws on the terminal block.
2. Connect the 12–48 VDC power line to the terminal block.
3. Tighten the connections using the screws on the terminal block.

Note that the unit does not have an on/off switch. It automatically turns on when it receives power. The PWR LED on the top panel will glow to indicate that the unit is receiving power. For power terminal block pin assignments, please refer to the hardware reference chapter for your model.

## Connecting PROFIBUS Devices

The unit's PROFIBUS port(s) are located on the front panel. Use a PROFIBUS cable to directly connect the unit to a PROFIBUS PLC or other PROFIBUS master.

For the PROFIBUS port pin assignments, please refer to Chapter 3. This information can then be used to construct your own PROFIBUS cable.

## Connecting Modbus Serial Devices

The unit's Modbus port(s) are located on the front panel. Use a Modbus cable to directly connect the unit to a Modbus RTU/ASCII device.

For the Modbus port pin assignments, please refer to Chapter 3. This information can then be used to construct your own Modbus cable.

## Connecting to a Host via Serial Console Cable

A RS-232 serial console port is located on the unit's front panel. This port is used for console configuration via a *CBL-RJ45-F9-150* RJ-45-to-DB9 cable.

For normal operation, use a standard straight-through RS-232 serial cable to connect the unit to your COM port. You connect the unit directly to a PC. Besides, use a serial cable to connect the unit to your PC's serial connector.

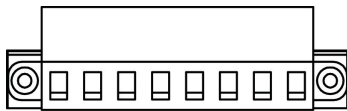
The Tx/Rx LED of the console port will light up to indicate serial connection status when data is communicated with each other.

The following topics are covered in this chapter:

- ❑ **Power Input and Relay Output Pinouts**
- ❑ **LED Indicators**
- ❑ **Dimensions**
- ❑ **Pin Assignments**
- ❑ **Mounting the Unit**
- ❑ **Specifications**
- ❑ **Adjustable Pull High/Low Resistors for the Modbus Port (P1) in RS-485 Mode**
- ❑ **Reset Button**
- ❑ **Rotary Switch**



# Power Input and Relay Output Pinouts



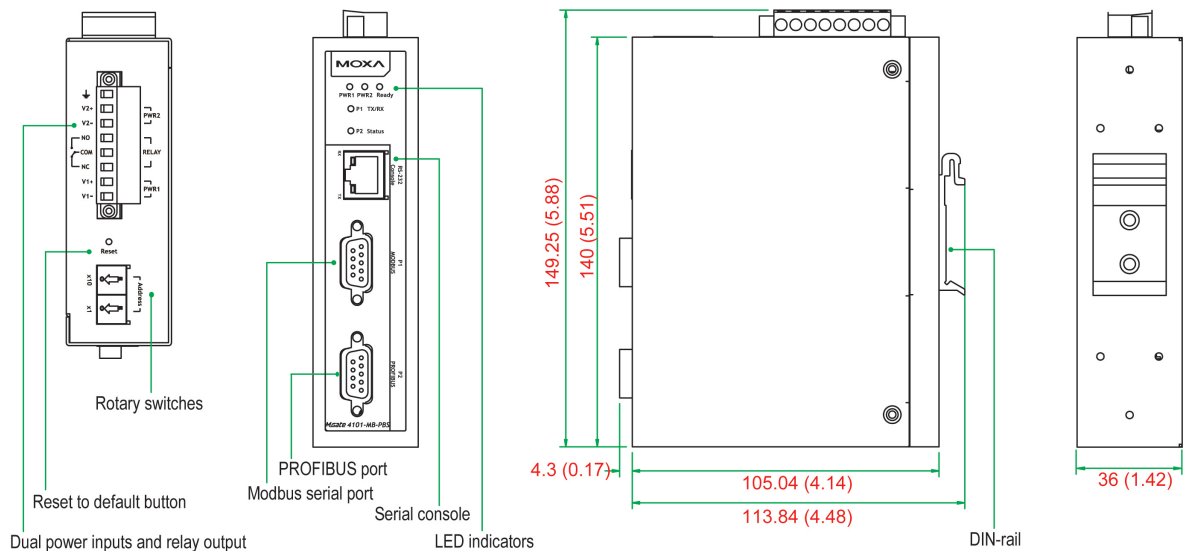
	V2+	V2-				V1+	V1-
Shielded Ground	DC Power Input 2	DC Power Input 2	N.O.	Common	N.C.	DC Power Input 1	DC Power Input 1

# LED Indicators

LED	Color	Function
PWR1	Green	Power is on.
	Off	Power is off.
PWR2	Green	Power is on.
	Off	Power is off.
Ready	Green	Gateway is operational.
	Red	Gateway has wrong settings.
	Off	Power is off or fault condition exists.
P1 Tx/Rx (Modbus Serial)	Green	Serial device is transmitting data.
	Orange	Serial device is receiving data.
	Off	No data is flowing to or from the serial port.
P2 Status (PROFIBUS)	Green	Steady: Data is exchanging
	Red	Steady: Baudrate automatically identified. Wrong slave address or CHK_PRM, or CHK_CFG will remain steady red
	Off	PROFIBUS offline

# Dimensions

unit = mm (inch)

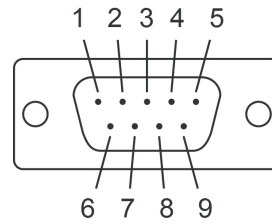


# Pin Assignments

## Modbus P1 Pin Assignment

The MGate 4101-MB-PBS series use DB9 (male) serial port to connect to Modbus devices.

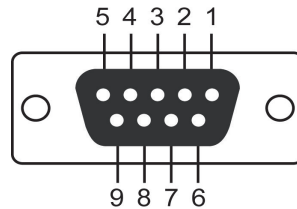
Pin	RS-232	RS-422/ RS-485 (4W)	RS-485 (2W)
1	DCD	TxD-(A)	-
2	RXD	TxD+(B)	-
3	TXD	RxD+(B)	Data+(B)
4	DTR	RxD-(A)	Data-(A)
5	GND	GND	GND
6	DSR	-	-
7	RTS	-	-
8	CTS	-	-
9	-	-	-



## PROFIBUS P2 Pin Assignment

The MGate 4101-MB-PBS series use DB9 (female) serial port to connect to PROFIBUS devices.

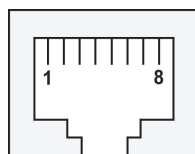
PIN	Signal Name
1	N.C.
2	N.C.
3	PROFIBUS D+
4	RTS
5	Signal common
6	5V
7	N.C.
8	PROFIBUS D-
9	N.C.



## Console (RS-232) Pin Assignment

The MGate 4101-MB-PBS series use RJ45 serial port to connect to PC to configure device.

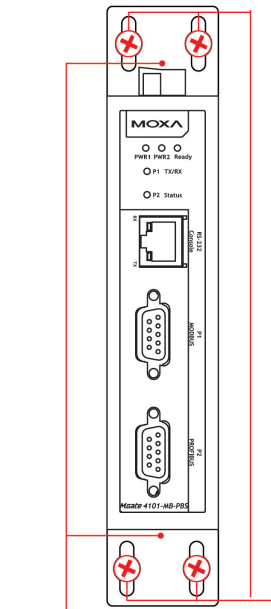
PIN	RS-232
1	DTR
2	RTS
3	GND
4	TXD
5	RXD
6	DCD
7	CTS
8	DTR



# Mounting the Unit

The unit can be mounted on the wall or on a DIN-rail. The MGate 4101-MB-PBS/4101I-MB-PBS series is designed to be attached to a DIN-rail or mounted on a wall. For DIN-rail mounting, push down the spring and properly attach it to the DIN-rail until it “snaps” into place. For wall mounting, install the wall mount kit (optional) first, and then screw the device onto the wall. The following figure illustrates the two mounting options:

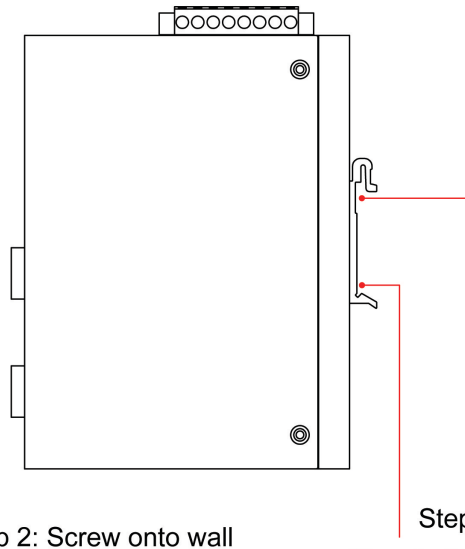
Wall-Mount Installation



Step 1: Install wall-mount kit

Step 2: Screw onto wall

DIN-Rail Installation



Step 1: Push down the spring  
Step 2: Click onto DIN rail

# Specifications

## Power Input

**Input Voltage:** 12 to 48 VDC

**Connector:** 8-pin terminal block (GND, V1+, V1-, Relay NO, Common, Relay NC, V2+, V2-), screw mounting

## Modbus Serial Interface

**Protocol:** Modbus ASCII/RTU, Master/Slave

**Number of Ports:** 1

**Serial Standards:** RS-232/422/485, software selectable

**Data Bits:** 7, 8

**Stop Bits:** 1, 2

**Parity:** None, Even, Odd, Space, Mark

**Flow Control:** RTS/CTS, XON/XOFF

**Baudrate:** 50 bps to 921.6 kbps

**Connector:** DB9 male

**Serial Line Protection ESD:** 15 kV protection for all signals

**Isolation:** 2 kV protection (MGate 4101I-MB-PBS only)

**RS-485 Data Direction Control:** ADDC® (automatic data direction control)

**Pull High/Low Resistor for RS-485:** 1 k $\Omega$ , 150 k $\Omega$  (switchable)

**Terminal Resistor:** 120  $\Omega$  for RS-485

**Modbus Function:** 1, 2, 3, 4, 5, 6, 15, 16

## Modbus Serial Signals

**RS-232:** TxD, RxD, RTS, CTS, DTR, DSR, DCD, GND

**RS-422:** Tx+, Tx-, Rx+, Rx-, GND

**RS-485-4w:** Tx+, Tx-, Rx+, Rx-, GND

**RS-485-2w:** Data+, Data-, GND

### PROFIBUS Interface

**Protocol:** PROFIBUS DP-V0 Slave

**Data Rate:** 9600 bps, 19.2, 93.75, 187.5, 500 kbps, 1.5, 3, 6 and 12 Mbps

**Connector:** DB9 female

**Isolation:** Built-in 2 kV

**Rotary Switch:** PROFIBUS address 0~99 (addresses 100 to 125 supported by SW)

### Console Interface

RS-232 (TxD, RxD, GND), 8-pin RJ45 (115200, n, 8, 1)

### Utility

**Driver Support:** Windows 2000/XP/2003/Vista/2008/7/8/8.1 x86/x64, 2012/2012 R2

### Physical Characteristics

**Housing:** Metal, IP30 protection

**Dimensions:** 36 x 105 x 140 mm (1.42 x 4.13 x 5.51 in)

### Environmental Limits

#### Operating Temperature:

Standard Temp. Models: 0 to 60°C (32 to 140°F)

Wide Temp. Models: -40 to 75°C (-40 to 167°F)

**Operating Humidity:** 5 to 95% RH

**Storage Temperature:** -40 to 85°C (-40 to 185°F)

### Standards and Certifications

**Safety:** EN 60950-1, UL 60950-1, EN 62368-1, UL 62368-1

**Hazardous Location:** ATEX, Class I Division 2, IECEx

**EMC:** EN 55032/35

**EMI:** CISPR 32, FCC Part 15B Class A

#### EMS:

IEC 61000-4-2 ESD: Contact: 4 kV; Air: 8 kV

IEC 61000-4-3 RS: 80 MHz to 1 GHz: 3 V/m

IEC 61000-4-4 EFT: Power: 2 kV; Signal: 1 kV

IEC 61000-4-5 Surge: Power: 2 kV; Signal: 2 kV

IEC 61000-4-6 CS: 150 kHz to 80 MHz: 10 V/m; Signal: 10 V/m

IEC 61000-4-8 PFMF

**Shock:** IEC 60068-2-27

**Freefall:** IEC 60068-2-32

**Vibration:** IEC 60068-2-6, IEC 60068-2-64

### Reliability

**Alert Tools:** Built-in buzzer

#### MTBF:

MGate 4101-MB-PBS Series: 1,537,948 hrs

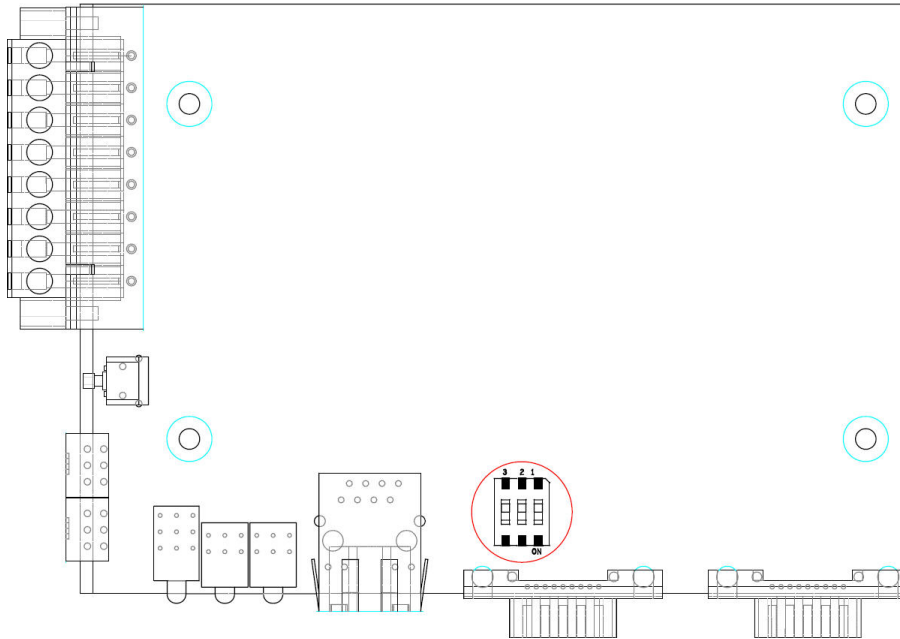
MGate 4101I-MB-PBS Series: 1,315,666 hrs

### Warranty

**Warranty Period:** 5 years

**Details:** See [www.moxa.com/warranty](http://www.moxa.com/warranty)

# Adjustable Pull High/Low Resistors for the Modbus Port (P1) in RS-485 Mode



SW	1	2	3
		Pull High	Pull Low
ON	1 K $\Omega$	1 K $\Omega$	120 $\Omega$
Default OFF	150 K $\Omega$	150 K $\Omega$	-

In some critical environments, you may need to add termination resistors to prevent the reflection of serial signals. When using termination resistors, it is important to set the pull high/low resistors correctly so that the electrical signal is not corrupted. The MGate uses jumper settings or DIP switches to set the pull high/low resistor values for each serial port.

**To set the pull high/low resistors to 150 K $\Omega$ ,** make sure that the two jumpers assigned to the serial port are not shorted by jumper caps. This is the default setting.

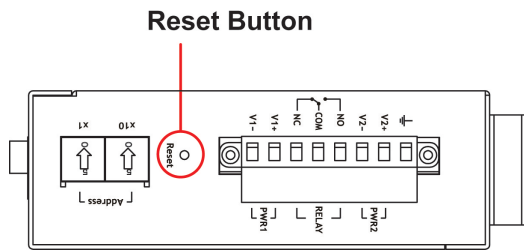
**To set the pull high/low resistors to 1 K $\Omega$ ,** make sure that the two jumpers assigned to the serial port are shorted by jumper caps.



### ATTENTION

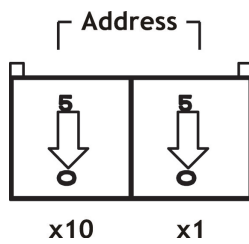
Do not use the 1 K $\Omega$  setting on the MGate when using the RS-232 interface. Doing so will degrade the RS-232 signals and shorten the maximum allowed communication distance.

# Reset Button



To reset the MGate to the factory default settings, hold down the reset button for about 5 seconds. The MGate will restart and be reset to factory default settings.

# Rotary Switch



Before communication, you must assign a slave ID to the PROFIBUS slave, If you would like to assign an address between 0 to 99, you need to change the rotary switch to the desired address. If you would like to assign an address which is over 99, you must set it in the MGate utility.

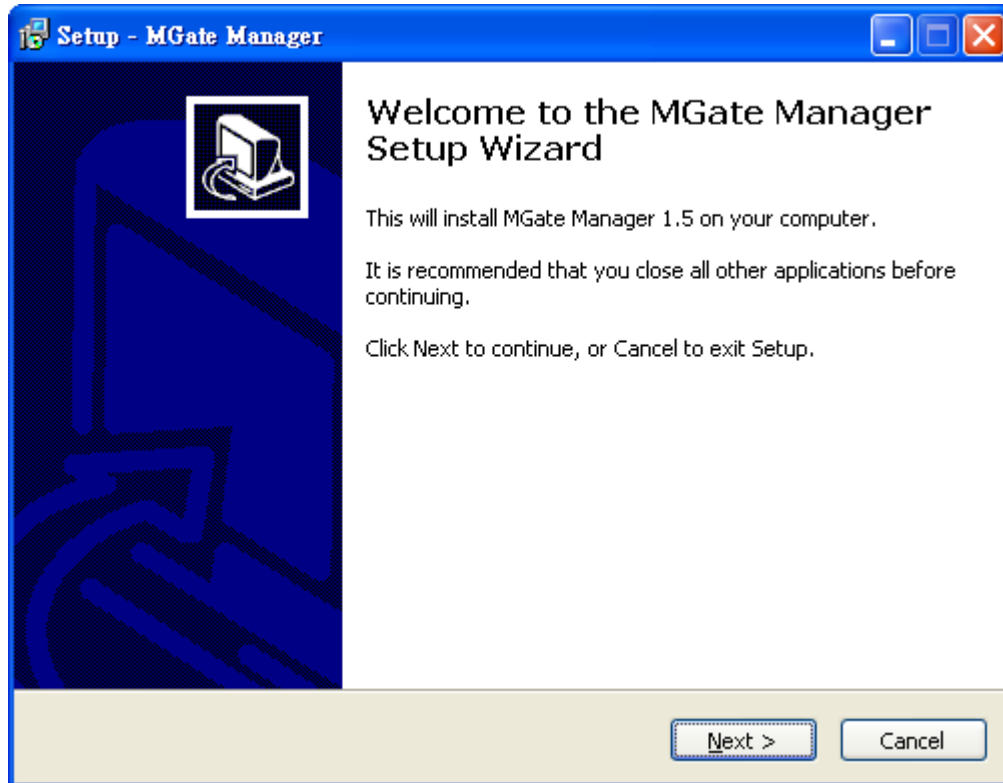
The following topics are covered in this chapter:

- ❑ **Installing the Software**
- ❑ **Starting MGate Manager**
- ❑ **Connecting to the Unit**
- ❑ **Modifying the Configuration**
  - Configure Device
  - Configure Modbus Settings
  - Set Up PROFIBUS
  - IO Mapping Setup
  - Auto Mapping
  - QuickLink
  - Paging
  - Load Default
  - Monitoring Modbus Activity
  - Diagnose
- ❑ **Upgrading Firmware**
- ❑ **Import/Export**
- ❑ **Off-Line Configuration**

# Installing the Software

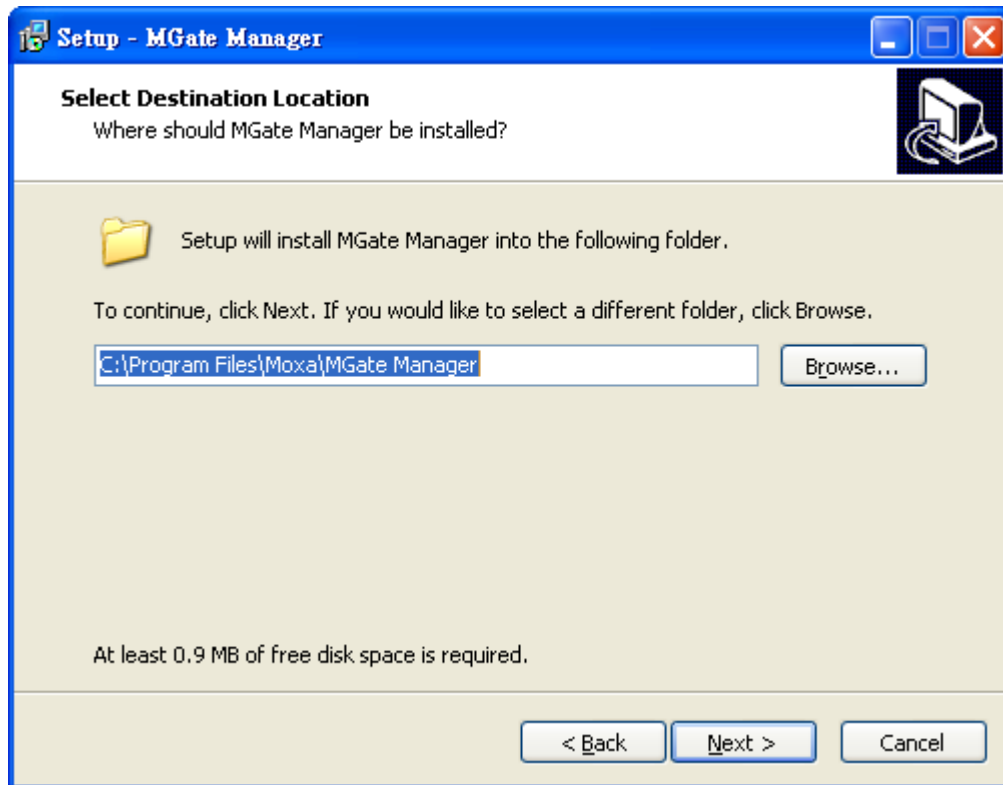
The following instructions explain how to install MGate Manager, a utility for configuring and monitoring MGate 4101-MB-PBS units over the network.

1. Please download the MGate Manager software from Moxa's website at <http://www.moxa.com>. Then, locate and run the following setup program to begin the installation process:  
MGM\_Setup\_[Version]\_Build\_[DateTime].exe  
(The latest version could have the following format: MGM\_Setup\_Verx.x.x\_Build\_xxxxxxx.exe.)
2. You will be greeted by the Welcome window. Click Next to continue.

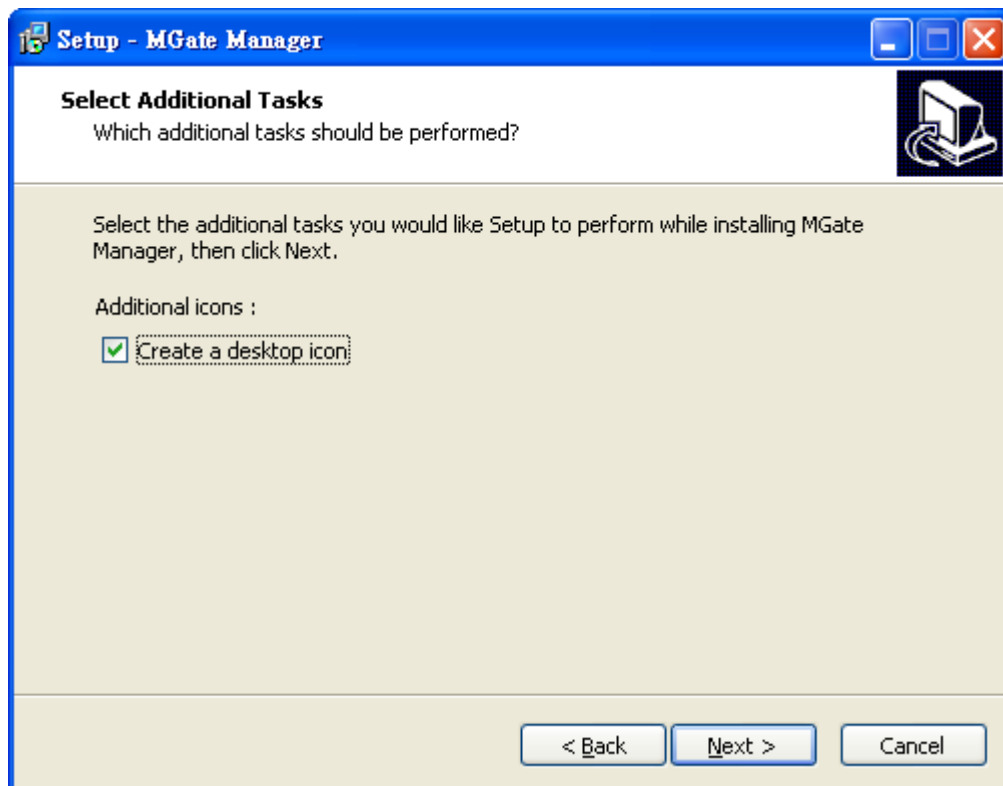




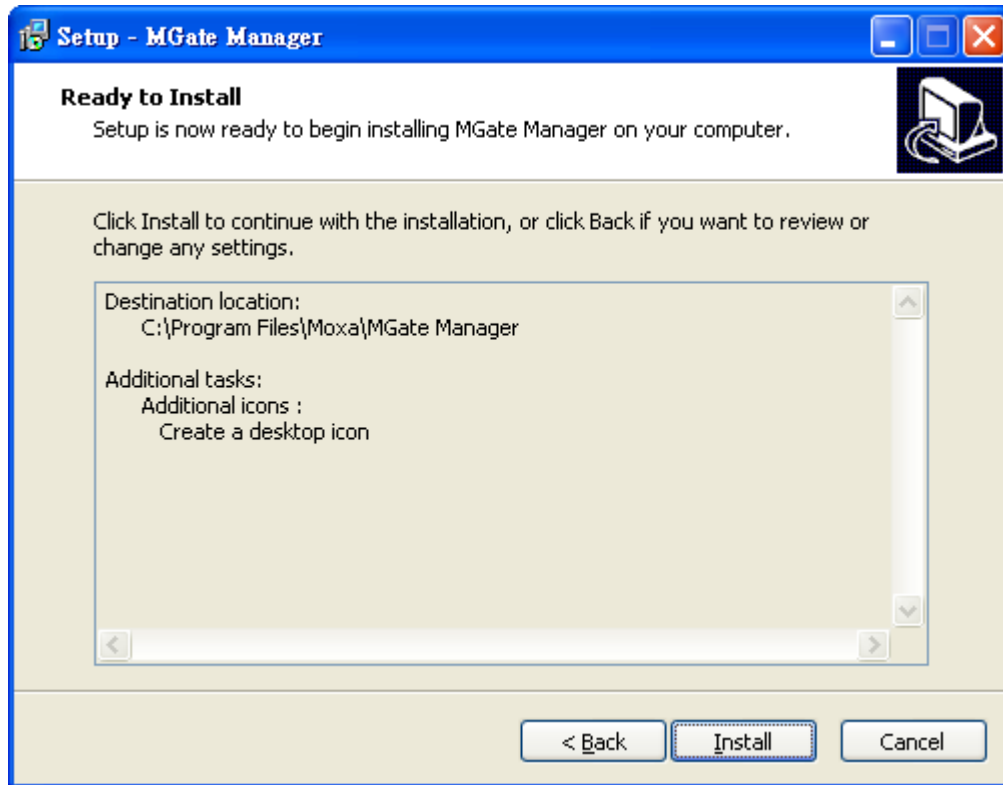
3. When the Select Destination Location window appears, click Next to continue. You may change the destination directory by first clicking on Browse.



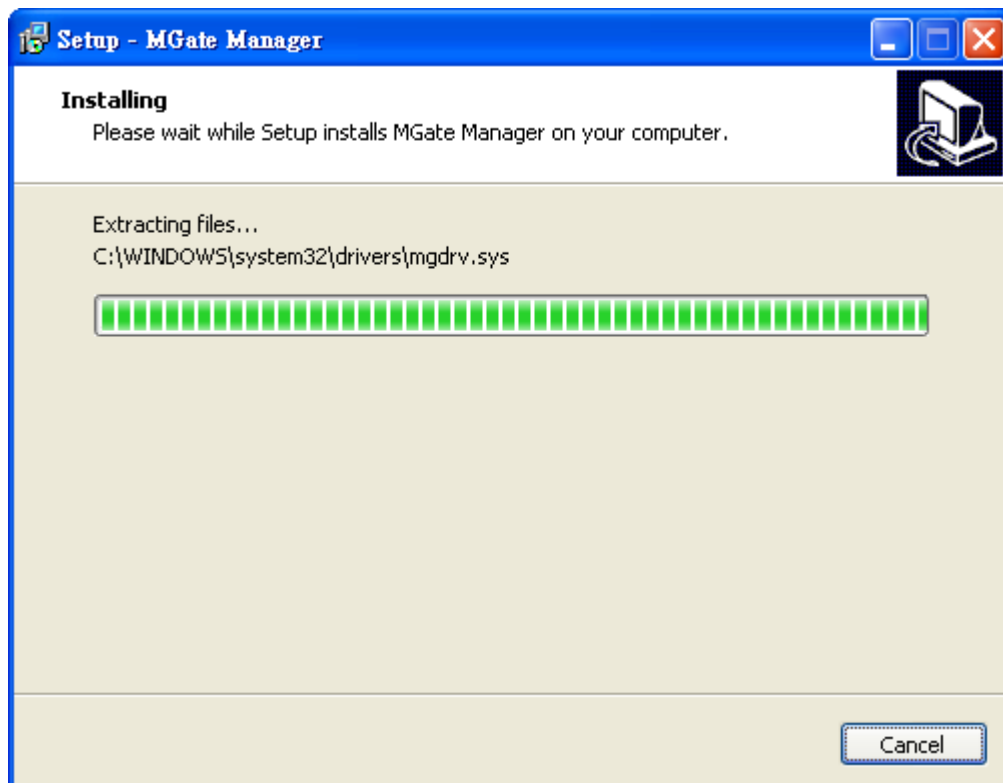
4. When the Select Additional Tasks window appears, click Next to continue. You may select Create a desktop icon if you would like a shortcut to MGate Manager on your desktop.



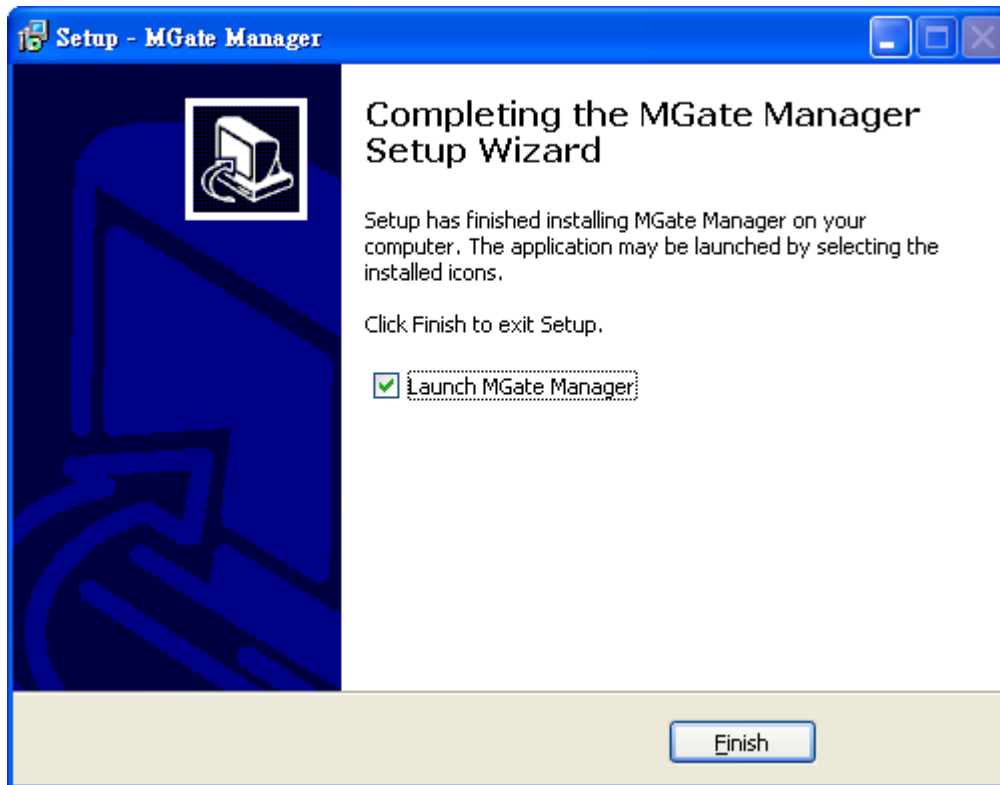
5. Click **Next** to start copying the software files.



6. A progress bar will appear. The procedure should take only a few seconds to complete.



7. A message will indicate that MGate Manager is successfully installed. You may choose to run it immediately by selecting Launch MGate Manager.

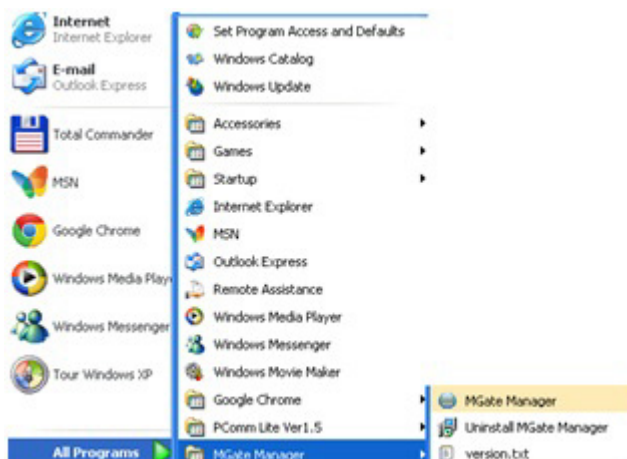


## Starting MGate Manager

MGate Manager is a Windows-based utility that is used to configure the MGate 4101-MB-PBS.

Before running MGate Manager, make sure that the MGate 4101-MB-PBS is connected to your PC. Please refer to Chapter 2 for more details.

You may open MGate Manager from the Windows Start menu by clicking **Start → Programs → MGate Manager → MGate Manager**. The MGate Manager window should appear as shown below.

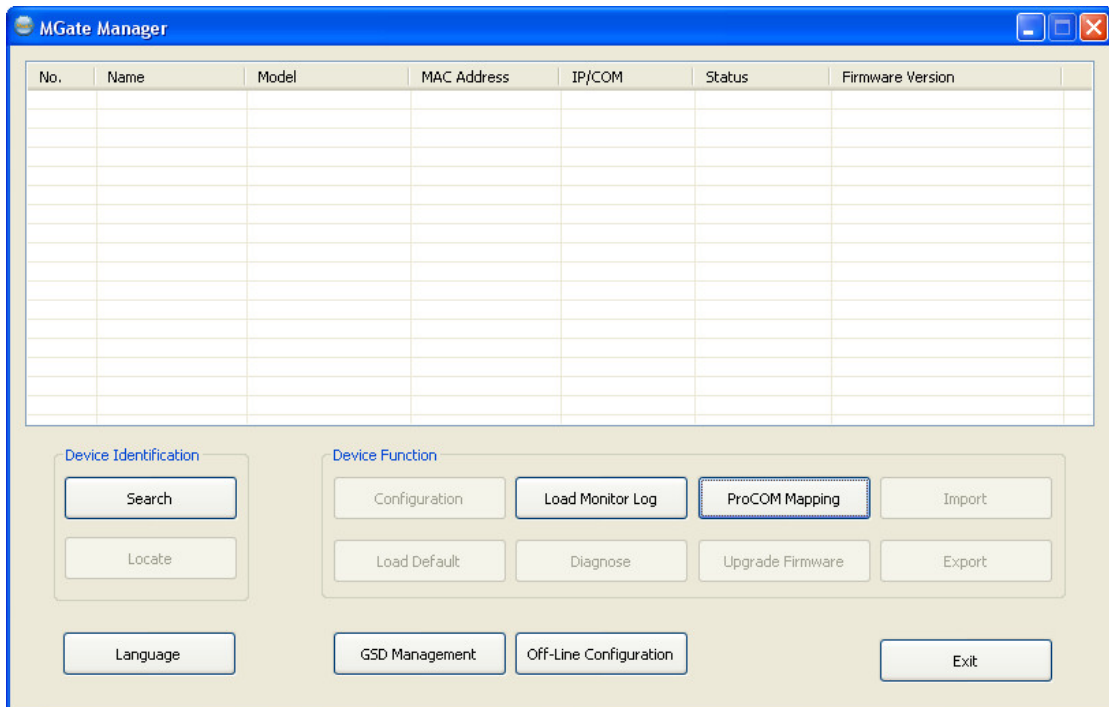


## Change Language Setting

If you wish to run MGate Manager in a different language, you may click **Language** to change the language setting. A dialog box showing the available languages should appear as shown below.



When you click **OK**, MGate Manager will immediately reflect your chosen language.



After changing to a different language, you will find that all strings on MGate Manager are replaced in your chosen language. For example, the above picture is shown in English. However, no matter what language you choose, it won't change the label on the language button.

**ATTENTION**

Set your MGate Manager to "**Default Language**" before contacting Moxa Technical Support.

With support for multiple languages, MGate Manager is more user-friendly and accessible. However, if you need assistance from Moxa Technical Support, please change the language to "Default Language". This will prevent any misunderstandings or confusion about MGate Manager menu items and commands as our engineers assist you.

The default language is English and will only be active for the current MGate Manager session. When you open MGate Manager again, the language will revert to your original setting.

## Connecting to the Unit

Prior to configuration, MGate Manager must be connected to its unit. There are three methods to establish connection. Broadcast Search locates the MGate series on the LAN. Search by IP attempts to connect to a specific unit by IP address, which is useful if the unit is located outside the LAN or can only be accessed by going through a router. Connect through COM port tries to connect to a separate unit via a RS-232 serial COM port.

### Broadcast Search

**Broadcast Search** is used for MGate Ethernet Gateways, such as the MGate MB3000 and MGate EIP3000 series, which are discovered via Ethernet by using broadcast IP. In addition, whenever you add an MGate 4101-MB-PBS via serial console, MGate Manager will automatically record the COM port(s) for the broadcast to search as well. Note that restarting MGate Manager will erase the COM port(s) record.

### Specify by IP Address

**Specify by IP Address** is used for MGate Ethernet Gateways, such as the MGate MB3000 and MGate EIP3000 series, which are discovered via Ethernet by using a specific IP address. Click **Specify by IP Address** if you know the IP address of the unit and wish to connect to it directly.

**ATTENTION**

If Search by IP Address fails to locate the MGate MB3000 or MGate EIP3000 series, the IP address that you entered might be incorrect. Try doing the search again and re-entering the IP address carefully.

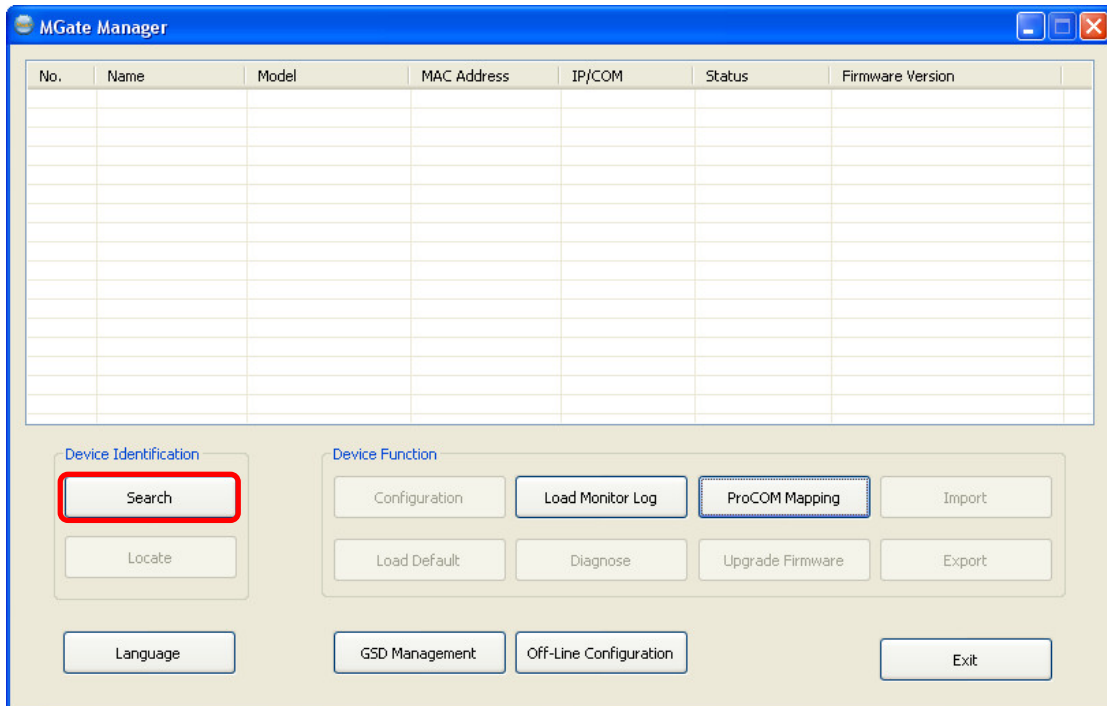
Another possibility is that the MGate MB3000 or MGate EIP3000 series is located on the same LAN as your PC, but on a different subnet. In this case, you can modify your PC's IP address and or netmask so that it is on the same subnet as the MGate MB3000 or MGate EIP3000 series. After your PC and the MGate MB3000 or MGate EIP3000 series are on the same subnet, MGate Manager should be able to find the unit.

### Connect through COM Port

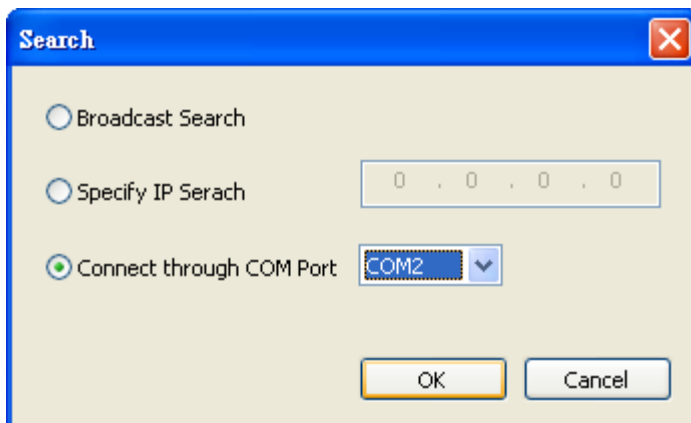
**Connect through COM Port** is used for MGate PROFIBUS Gateways, such as the MGate 4101-MB-PBS series, which are discovered via RS-232 serial COM Port. Click **Connect through COM Port** if you know the COM port number of the unit.

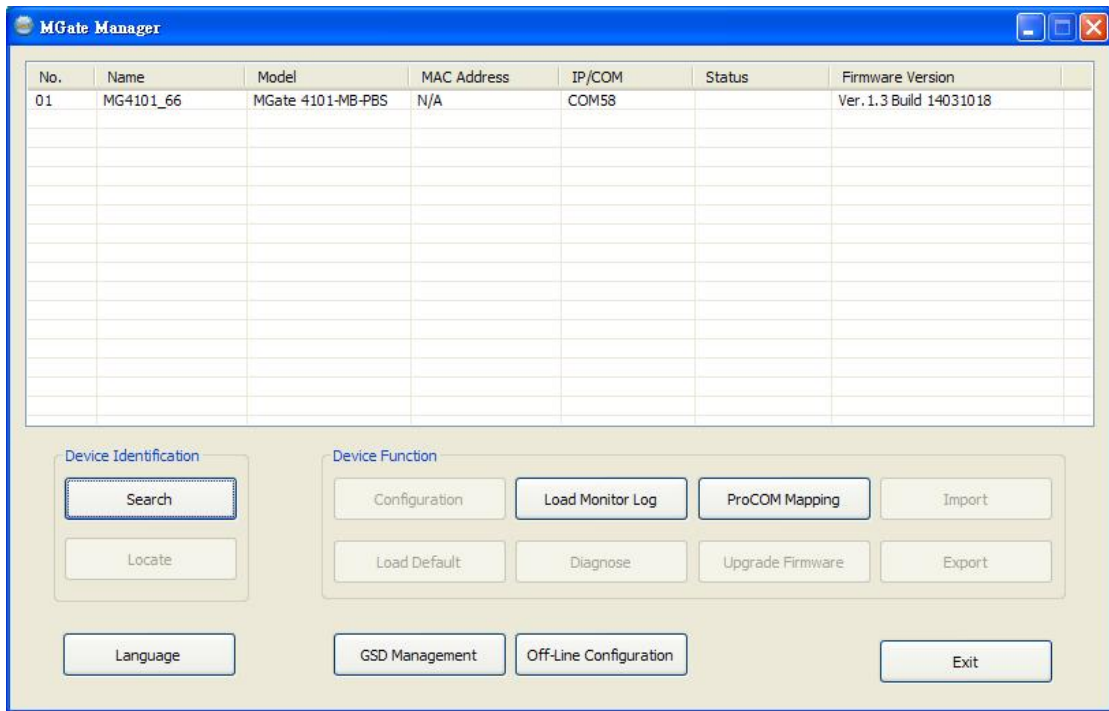
## Search

Click **Search** to begin searching the serial console for the MGate 4101-MB-PBS units.



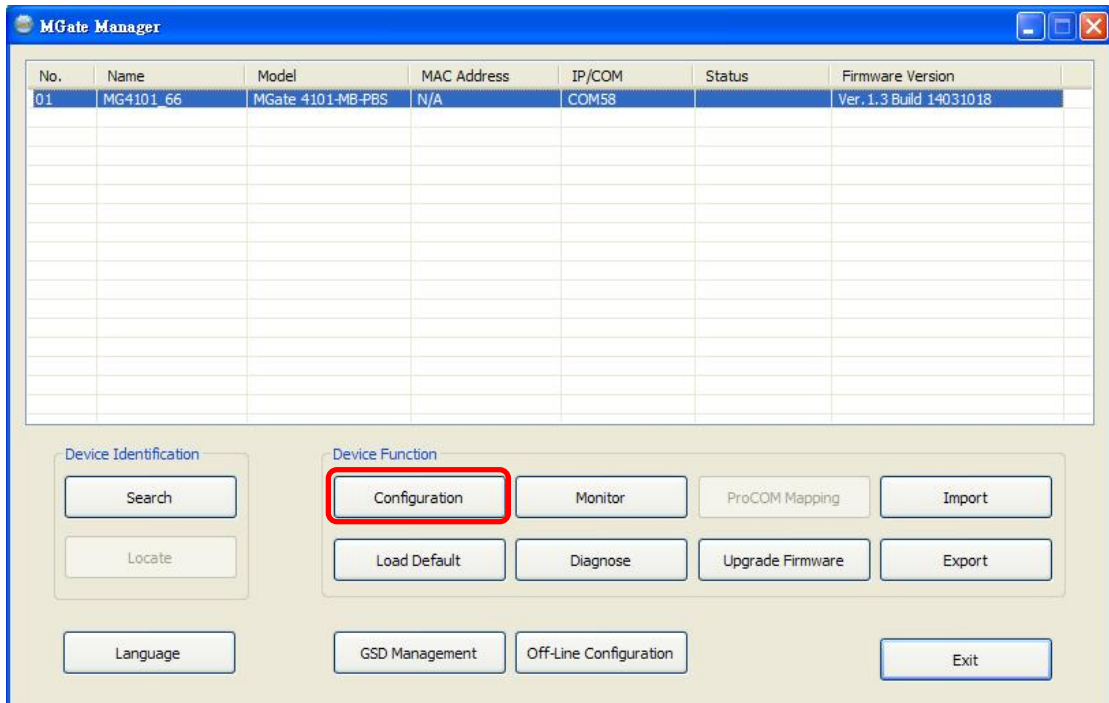
A dialog box will appear. Click **Connect through COM Port** and choose which COM port is used to connect to MGate 4101-MB-PBS.





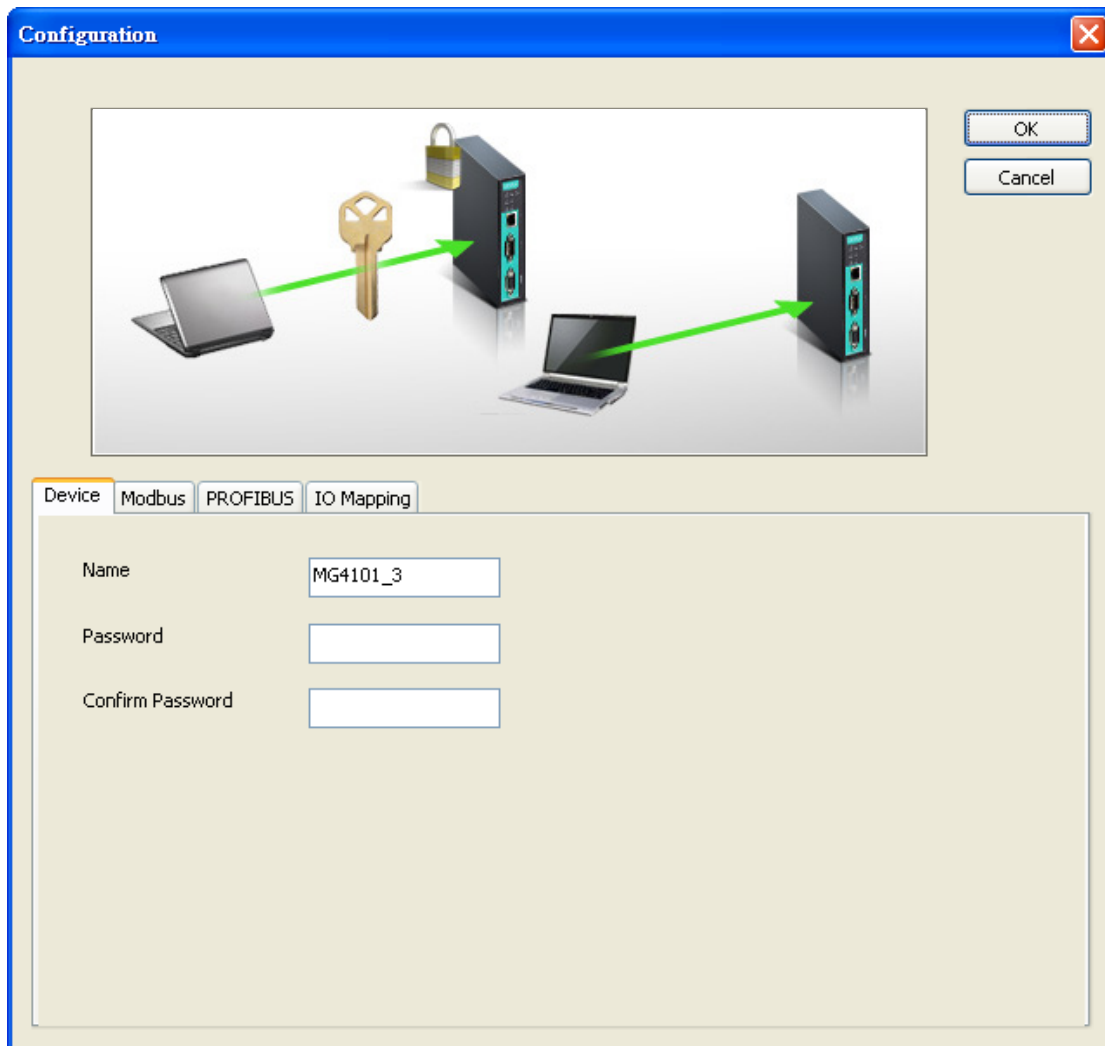
## Modifying the Configuration

Once your unit is displayed in MGate Manager, select it by clicking on it. The Configuration button will become available. Click **Configuration** to open the configuration window.



## Configure Device

In first page, you can change device name and select a password to protect the unit from unauthorized access.



Parameter	Value	Notes
Name	(an alphanumeric string)	You can enter a name to help you identify the unit, such as the location, function, etc.
Password	(an alphanumeric string)	You can set a password to prevent unauthorized users from configuring the unit. The password will be required when anyone attempts to configure the unit over the network. Modbus operation is not affected by the password.
Confirm password	(an alphanumeric string)	Re-type the password again for confirmation.



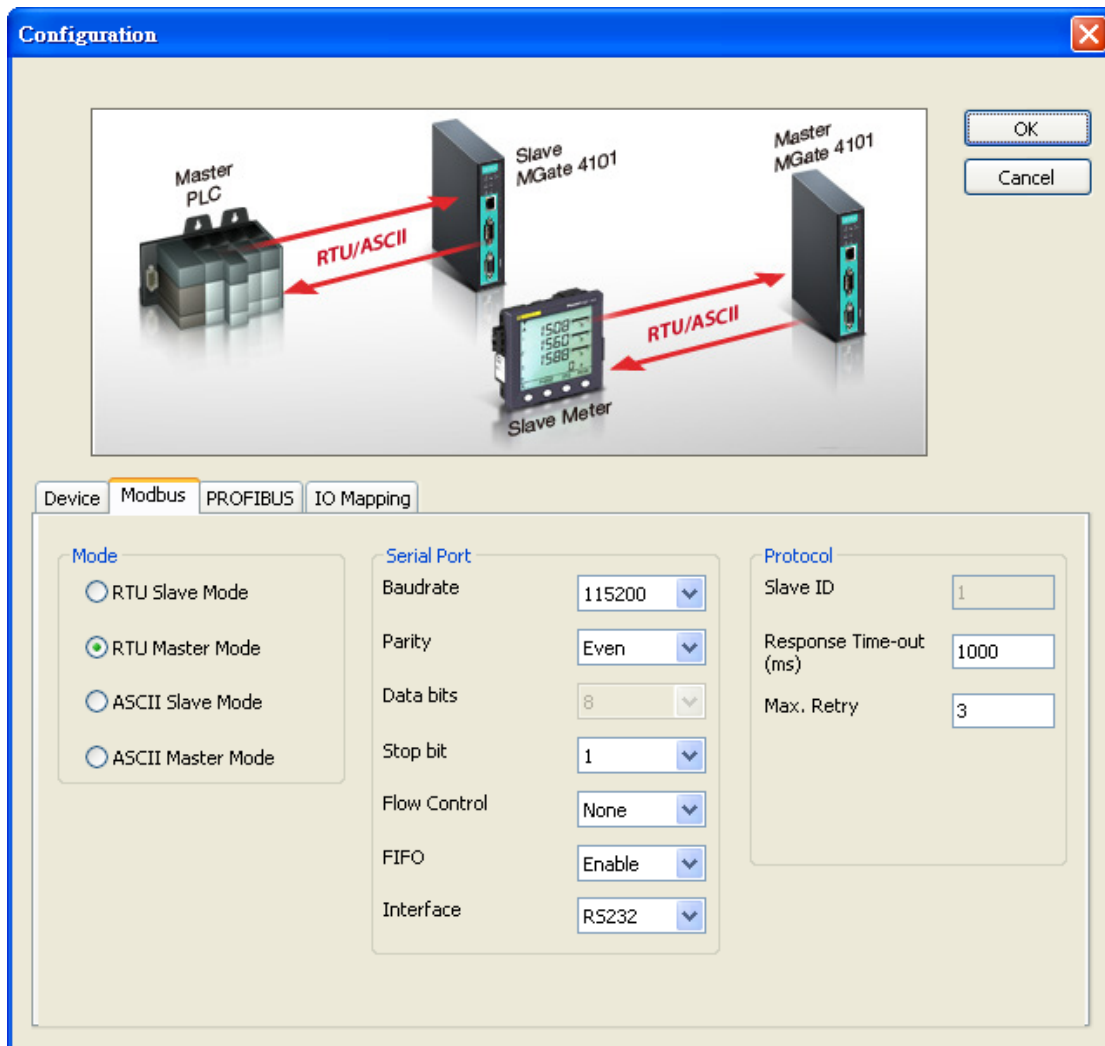
### ATTENTION

To erase an existing password, leave both the New Password and Confirm Password text input boxes blank. The password will be erased when you click OK in the bottom right corner.



## Configure Modbus Settings

The Serial tab is where Modbus serial port’s communication parameters are configured. You can configure Baud Rate, Parity, Stop Bit, Flow Control, FIFO, and Interface Mode.



Mode	Description
RTU Master	Modbus RTU slave(s) will be connected to the serial port
RTU Slave	A Modbus RTU master will be connected to the serial port
ASCII Master	Modbus ASCII slave(s) will be connected to the serial port
ASCII Slave	A Modbus ASCII master will be connected to the serial port

Serial Port	Description
Baud Rate	50 bps to 921600 bps
Parity	None, Odd, Even, Mark, Space
Data Bits	8
Stop Bits	1, 2
Flow Control	None, DTR/DSR, RTS/CTS
FIFO	Enable, Disable
Interface	RS-232, RS-422, RS-485 2-wire, RS-485 4-wire

Protocol	Description
Slave ID	Slave mode only, Modbus slave identification number of the MGate 4101-MB-PBS
Response Time-out (ms)	Master mode only, the time master will wait for a response after sending a request. See detailed description below.
Max. Retry	Master mode only, the number of times the master will retry the same request when response time out.

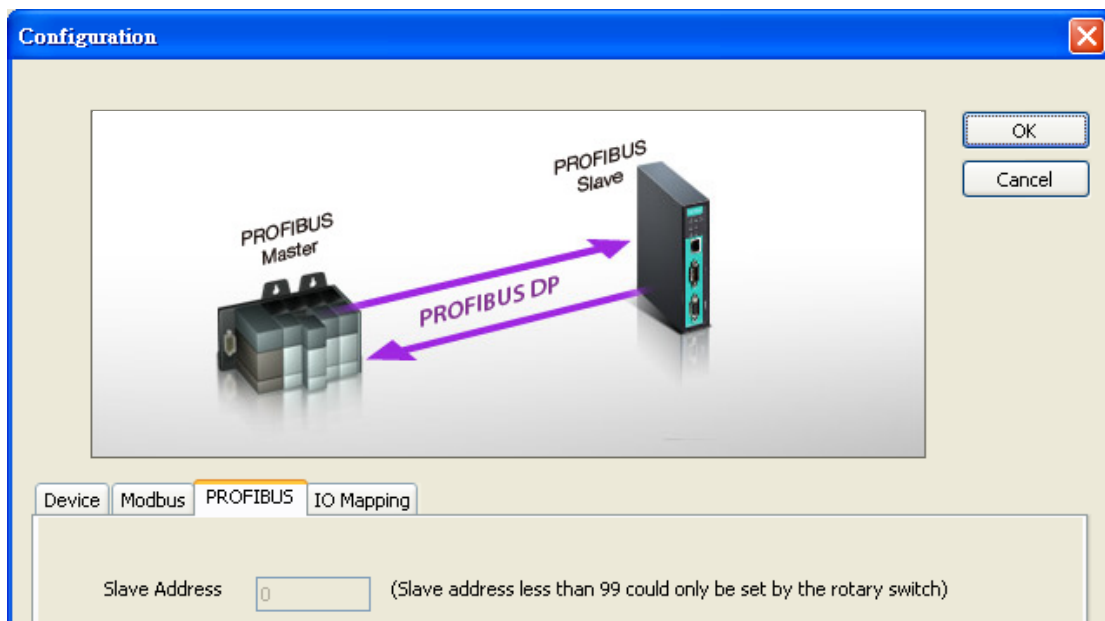
### Response Time-Out

According to the Modbus standard, the time that it takes for a slave device to respond to a request is defined by the device manufacturer (please refer to Appendix A of MGate MB3000 series User Manual for details). Based on this response time, a master can be configured to wait a certain amount of time for a slave’s response. If no response is received within the specified time, the master will disregard the request and continue operation. This allows the Modbus system to continue operation even if a slave device is disconnected or faulty.

On the MGate 4101-MB-PBS, the “Response Time-out” field is used to configure how long the gateway will wait for a response from a Modbus ASCII or RTU slave. Please refer to your device manufacturer’s documentation to manually set the response time-out.

## Set Up PROFIBUS

Every PROFIBUS slave device should be assigned a unique address in the same field. If the address you would assign is lower than 99, please use the rotary switches (decimal) on the top of device. If the address you would assign is higher than 99, please set the rotary switches as 99 and **Slave Address** field will be enabled for setting the designated address.



PROFIBUS	Description
Slave Address	Before communication, you must assign a slave ID to the PROFIBUS slave, If you would like to assign an address between 0-99, you need to change the rotary switch to the desired address. If you would like to assign an address which is over 99, you must set it in the MGate utility. If you would like to use a slave address which is over 99, set the rotary switch to “99” and then use MGate Manager to configure the desired address.

Refer to chapter 3 for instructions on how to set the slave address using a rotary switch.

## IO Mapping Setup

In this page, you should define all commands that Modbus uses and all I/O modules PROFIBUS slave provides.

The screenshot shows a configuration window titled "Configuration" with a close button (X) in the top right. Below the title bar is a diagram illustrating the IO Mapping Setup. On the left is a "PROFIBUS Master PLC". In the center is a device with "Out DX-out" and "In DX-in" ports. On the right is a "Modbus Slave Meter". Purple arrows show "DX-out" from the PLC to the device and "DX-in" from the device to the PLC. Red arrows show "Write (DX-out)" from the device to the meter and "Read (DX-in)" from the meter to the device. To the right of the diagram are "OK" and "Cancel" buttons.

Below the diagram are tabs for "Device", "Modbus", "PROFIBUS", and "IO Mapping". Under "IO Mapping", there are "QuickLink" and "Auto Mapping" buttons, a "Page1" dropdown, and a "Paging" checkbox. Two tables are present:

**Modbus (Read/Write:0/0 bytes)**

Name	Enable	SID	Func	Addr	Len	Inter Addr	Poll Inte

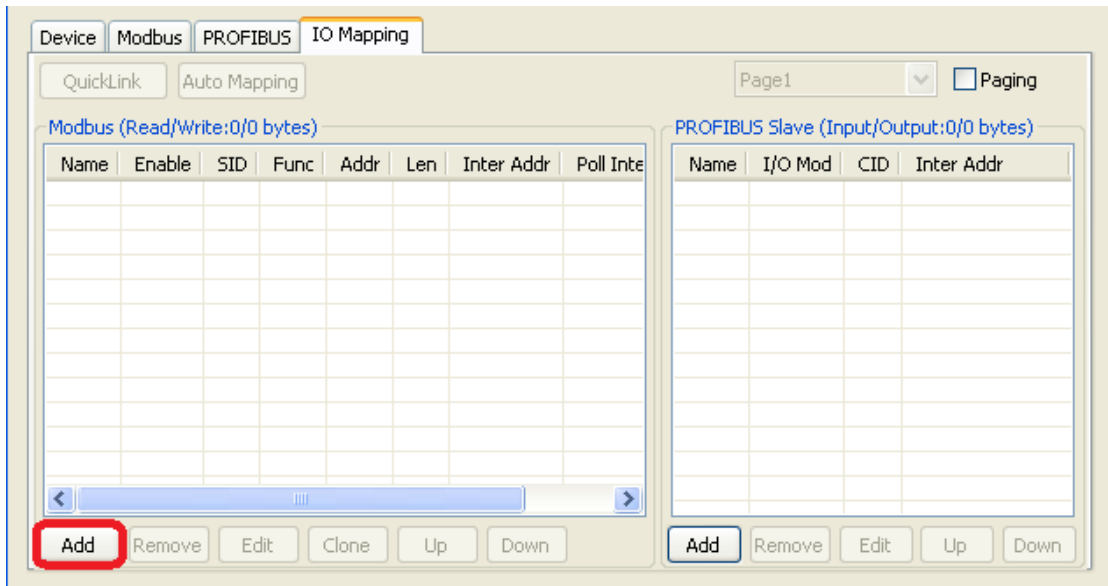
**PROFIBUS Slave (Input/Output:0/0 bytes)**

Name	I/O Mod	CID	Inter Addr

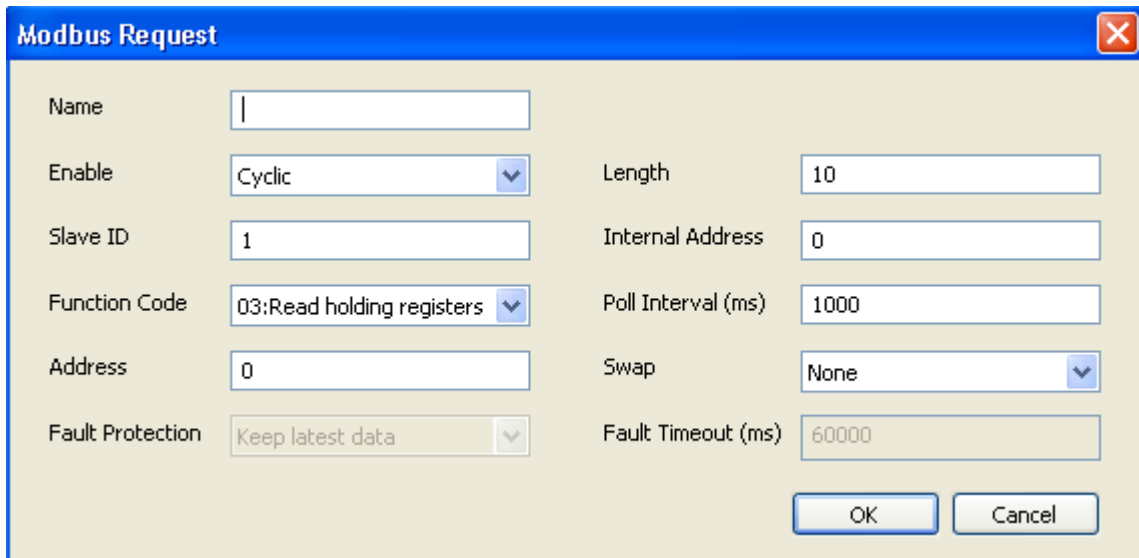
At the bottom of the window are buttons: "Add" (highlighted with a red box), "Remove", "Edit", "Clone", "Up", "Down" for the Modbus table; and "Add", "Remove", "Edit", "Up", "Down" for the PROFIBUS Slave table.

If you choose MGate 4101-MB-PBS as Modbus Master, you should designate all Modbus Read or Write requests in the table on the left.

Click **Add** to create each Modbus request.



Each Modbus request includes Name, Enable, Modbus slave ID, Function Code, Address, Length, Internal Address, Poll Interval, Swap, Fault Protection, Fault Timeout. Please refer to datasheets or manuals of Modbus slave devices to fill out these fields.



Parameter	Description
Name	Enter a name to help identify the command, such as the location, function etc.
Enable	The Enable for the transaction: Disable: The transaction is never sent Cyclic: The transaction is sent cyclically at the interval specified in the "Poll Interval" parameter. Data change: The data area is polled for changes at the time interval defined by Poll Interval. A transaction is issued when a change in data is detected.
Slave ID	The Modbus slave id that this slave module will accept. 0: Broadcasting 1-255: Device specific
Function Code	When a message is sent from a Client to a Server device the function code field tells the server what kind of action to perform. We support the following function code by far: 01: Read coils 02: Read discrete inputs

	03: Read holding registers 04: Read input register 05: Write single coil 06: Write single register 15: Write multiple coils 16: Write multiple registers
Address	Station Address. The range is from 0 to 65535
Length	The length field is a byte count of the following fields, including the Unit Identifier and data fields. The range is from 1 to 1953.
Internal Address	This parameter specifies the location of the trigger byte in internal memory. The range is from 0 to 243.
Poll Interval (ms)	Polling interval in millisecond, since the module sends all requests in turns, the actual polling interval also depends on the number of requests in the queue and their parameters. The range is from 10 to 1200000.

Parameter	Description
Swap	Data Byte Swapping None: Don't need to swap Byte: 0x0A, 0x0B, 0x0C, 0x0D becomes 0x0D, 0x0C, 0x0B, 0x0A. Word: 0x0A, 0x0B, 0x0C, 0x0D becomes 0x0C, 0x0D, 0x0A, 0x0B. ByteWord: 0x0A, 0x0B, 0x0C, 0x0D becomes 0x0D, 0x0C, 0x0B, 0x0A. There are two phases in changing ByteWord 1). 0x0A, 0x0B, 0x0C, 0x0D becomes 0x0B, 0x0A, 0x0D, 0x0C. 2). 0x0B, 0x0A, 0x0D, 0x0C becomes 0x0D, 0x0C, 0x0B, 0x0A.
Fault Protection	For the Modbus RTU master mode, the opposite side refers to the PROFIBUS side. The Modbus write command is sent from the PROFIBUS. Once the PROFIBUS connection fails, the gateway will not be able to receive the PROFIBUS command, but the gateway will continuously send Modbus write commands to the Modbus RTU slave device. To avoid problems when the PROFIBUS side fails, the MGate 4101 can be configured to react in one of three ways: keep latest data, clear data to zero, and user-defined value.
Fault Timeout	Defines the communication timeout for the PROFIBUS side. The range is from 0 to 65535 ms. (the default setting is 60000 ms.)

**Fault Protection**

The Fault Protection function sends a predefined setting to field devices to prevent incorrect actions when an upstream connection is lost. You can configure the criteria used to determine what to do when the write command is no longer received from the PROFIBUS side. For example, when a PROFIBUS cable comes loose accidentally, the most up-to-date write command from the PROFIBUS side will not be received by the gateway. Hence, the Modbus master will continuously send Modbus write commands to the slave device, which is now out-of-date, creating an inconsistency between the PROFIBUS and Modbus sides. To avoid this problem, the MGate 4101 supports options to determine which actions should be taken when the PROFIBUS side is disconnected from the gateway.

Options	Description
Keep latest data	The gateway will write the same data to the slave device.
Clear data to zero	The gateway will write zero values to the slave device.
User-defined value	A user-defined value will be written to the slave device.

After adding a command, you find out that many similar commands with different slave IDs need to be configured. You can choose (Ctrl + click-left) desired commands and press **Clone** to duplicate commands.

Modbus (Read/Write:12/2 bytes)

Name	Enable	SID	Func	Addr	Len	Inter Addr	Poll
Command1	Cyclic	1	3	0	2	0	100
Command2	Cyclic	1	3	2	4	4	100
Command3	Cyclic	1	6	0	1	40000	100

Then, a dialog box that is used to set the desired Slave ID will appear. The Slave ID range could be set and then click **OK** to produce commands.

**Clone Modbus Request** ✖

Slave ID  (ex: 1,3,5-11)

Modbus (Read/Write:24/2 bytes)

Name	Enable	SID	Func	Addr	Len	Inter Addr	Poll
Command1	Cyclic	1	3	0	2	0	100
Command2	Cyclic	1	3	2	4	4	100
Command3	Cyclic	1	6	0	1	40000	100
Command1	Cyclic	2	3	0	2	12	100
Command2	Cyclic	2	3	2	4	16	100

After all Modbus requests finish, all the data collected from Modbus should be mapped to PROFIBUS I/O modules for the PROFIBUS Master to use.

Click **Add** to create each PROFIBUS I/O module in the table on the right.

Device Modbus PROFIBUS **IO Mapping**

QuickLink Auto Mapping Page1  Paging

Modbus (Read/Write:12/2 bytes)

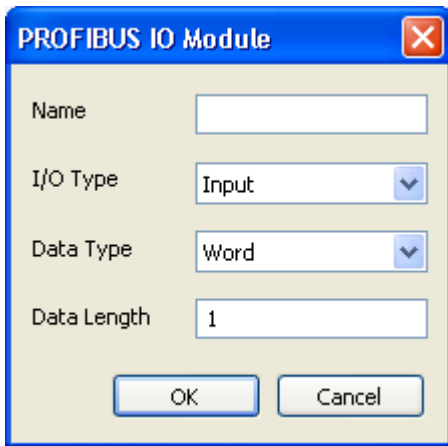
Name	Enable	SID	Func	Addr	Len	Inter A...	Poll :
Command1	Cyclic	1	3	0	2	0	1000
Command2	Cyclic	1	3	2	4	4	1000
Command3	Cyclic	1	6	10	1	40000	1000

PROFIBUS Slave (Input/Output:0/0 bytes)

Name	I/O Mod	CID	Inter Addr

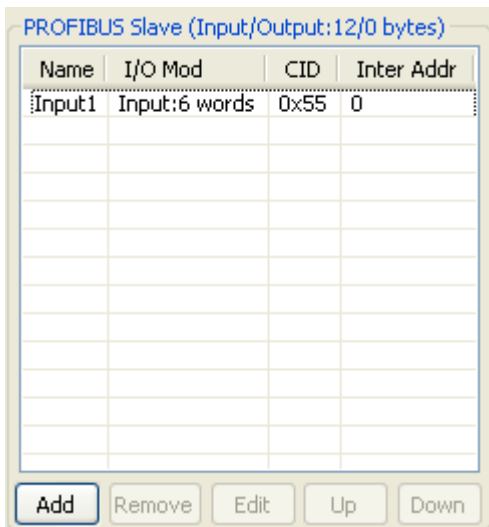
Buttons: Add Remove Edit Clone Up Down (for Modbus) and Add Remove Edit Up Down (for PROFIBUS Slave)

Then, a dialog which is used to set up the IO module will appear, please adjust the parameters which correspond with the Modbus requests you set before. Click **OK** to record this IO module.



Parameter	Description
Name	Enter a name to help identify the module, such as the location, function etc.
I/O Type	Input: Used to map into input memory Output: Used to map into output memory
Data Type	The data type for this IO module
Data Length	The data length for this IO module. The range is from 1 to 64.

Finally, you can see the IO module you configure before is put into PROFIBUS Slave list.



Follow the steps above; you can map all of the Modbus requests you need into IO module.



If you would like to check if the I/O map is totally correct, you could click **PROFIBUS I/O module** that will show what Modbus commands are included in the table on the right. After finishing the configuration, MGate 4101-MB-PBS can communicate between the PROFIBUS and Modbus protocols.

Name	Enable	SID	Func	Addr	Len	Inter Addr	Poll
Command1	Cyclic	1	3	0	2	0	1000
Command2	Cyclic	1	3	2	4	4	1000
Command3	Cyclic	1	6	0	1	40000	1000

Name	I/O Mod	CID	Inter Addr
Input1	Input:6 words	0x55	0
Output	Output:1 word	0x60	40000

**NOTE** Each "Name" of the commands must be mapped, that is, the commands in Modbus will correspond with the I/O module in PROFIBUS.

### Auto Mapping

Auto Mapping is a useful function that can help you map Modbus commands to PROFIBUS I/O modules easily. This function is for Modbus master mode only. Typically, users need to spend lots of time in setting I/O modules. By using the Auto Mapping function, it will map Modbus commands to PROFIBUS I/O modules automatically. You can map it in one of three ways: All-in-one, One-to-one, or by Slave ID.

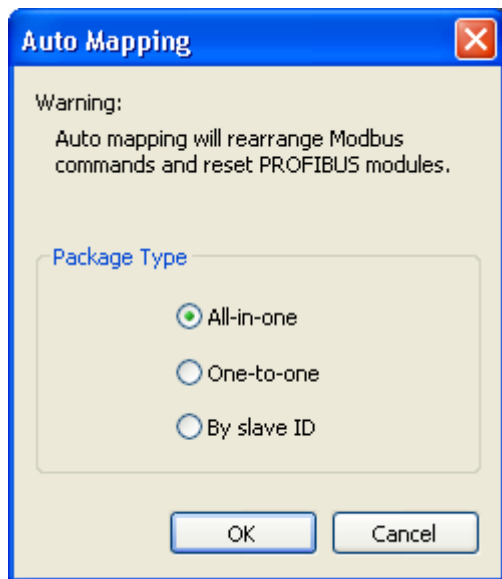
Device: Modbus | PROFIBUS | **IO Mapping**

QuickLink: **Auto Mapping** | Page 1 |  Paging

Name	Enable	SID	Func	Addr	Len	Int...	Poll Inte
Command1	Cyclic	1	3	0	2	0	1000
Command2	Cyclic	1	3	2	4	4	1000
Command1	Cyclic	2	3	0	2	12	1000
Command2	Cyclic	2	3	2	4	16	1000

Name	I/O Mod	CID	Inter Addr
------	---------	-----	------------

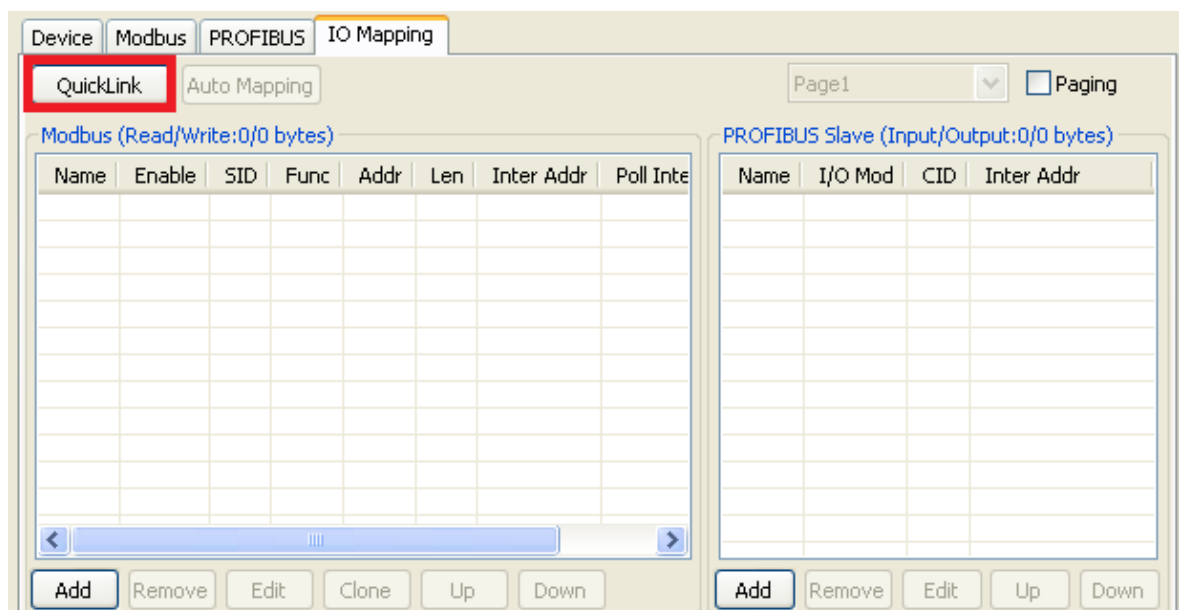
Click the **Auto Mapping** function. Then, a dialog box that is used to select the package types will appear. Please select one of them to map Modbus commands. Click **OK** to produce PROFIBUS I/O modules.



Package Type	Description
All-in-one	Combine all the Modbus read/write commands to PROFIBUS one input/output module respectively.
One-to-one	Combine each Modbus read/write command to PROFIBUS each input/output module respectively.
By slave ID	Combine Modbus read/write commands by slave ID to PROFIBUS input/output modules respectively.

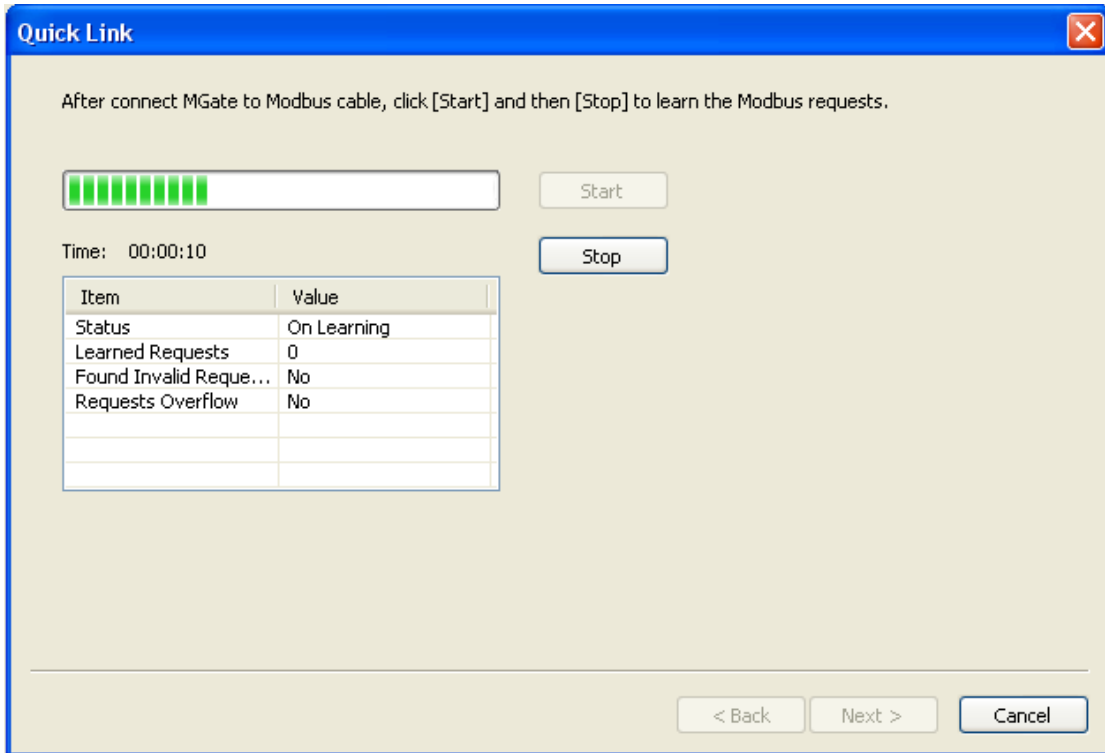
## QuickLink

The QuickLink is an innovative function to let you configure more quickly and easily, Typically, most PROFIBUS users must spend a lot of time to set up Modbus commands in a PROFIBUS application. By using the QuickLink function, the MGate 4101-MB-PBS will learn Modbus requests automatically to save time in deployment. However, the function is only enabled in Modbus master mode. (Please refer to the Typical Application in the Appendix for more details). Start QuickLink by clicking the **QuickLink** button.

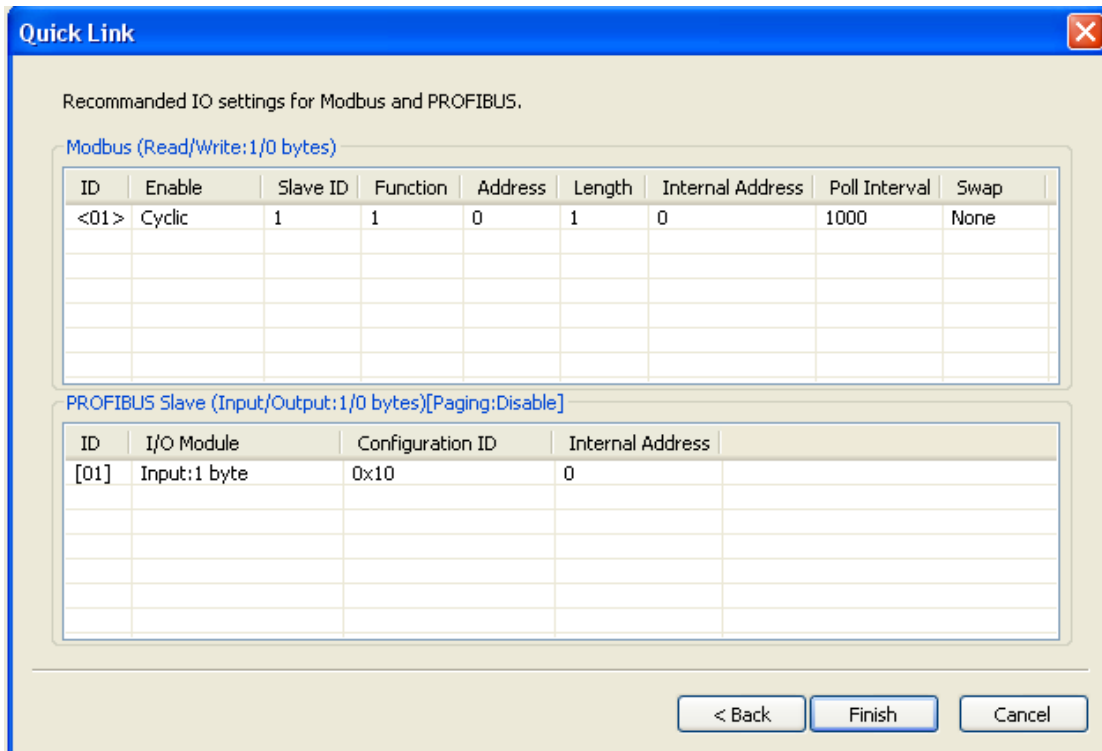


It takes some time to learn the Modbus requests. Begin by clicking the **Start** button, which will change the status to On Learning. The number of Learned Requests will increase as the MGate 4101-MB-PBS learns each request. When you are sure all the requests have been learned by the MGate 4101-MB-PBS, click the **Stop** button, then click the **Next** button to continue QuickLink.

**NOTE** QuickLink function will work correctly only when all the serial parameter settings are set correctly.

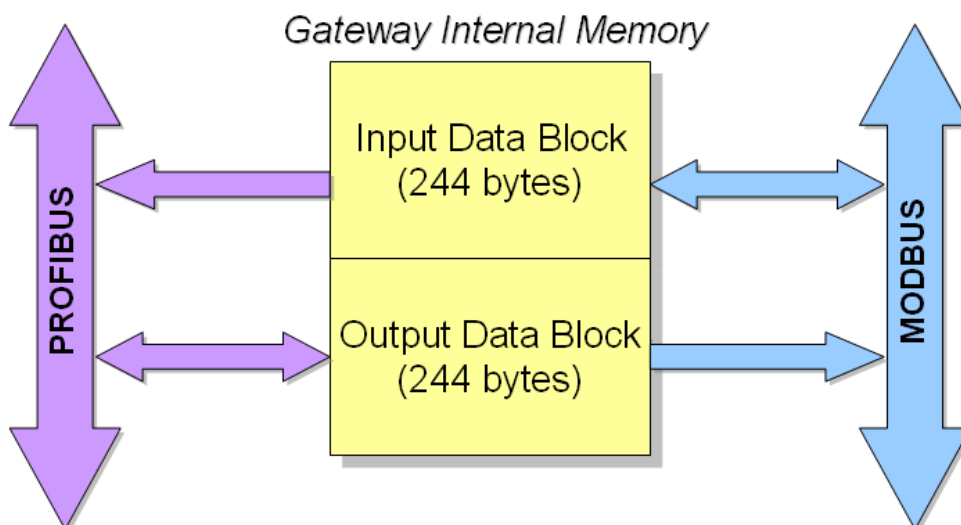


The interface of the next dialogue box is divided into two sections. The upper section is labeled Modbus and will display the details of the Modbus requests which have been learned by the MGate 4101-MB-PBS. The lower section is labeled PROFIBUS Slave and will display the I/O module. Moreover, based on these learned requests, the I/O module blocks are allocated intelligently by MGate Manager. To complete the process, click the Finish button to make the settings work.



## Paging

Gateway internal memory is divided into two blocks. The input memory address starts from 0x00000, and the out memory starts from 0x40000. The following picture demonstrates the memory structure. Each page contains 244 bytes.



Input refers to the dataflow from the Modbus device to the PROFIBUS master. More specifically, it means the gateway will read the Modbus device's data and store in its input memory area. And the PROFIBUS master will read these Modbus data stored at the gateway's input memory. Users can choose internal memory address between 0 to 224.

Output refers to the dataflow from the PROFIBUS master to the Modbus devices. The PROFIBUS data that are being written to the Modbus device will be stored at the gateway's output memory area, and then the Modbus device will write those data stored at the gateway's output memory area. Users can choose internal memory address between 40000 to 40242.

Configuration

OK  
Cancel

PROFIBUS Master PLC

Out DX-out

In DX-in

Write (DX-out)

Read (DX-in)

Modbus Slave Meter

DX-out

DX-in

Device Modbus PROFIBUS IO Mapping

QuickLink Auto Mapping

Page1  Paging

Modbus (Read/Write:24/0 bytes)

Name	Enable	SID	Func	Addr	Len	Inter Addr	Poll
Command1	Cyclic	1	3	0	2	2	100
Command2	Cyclic	1	3	2	4	6	100
Command1	Cyclic	2	3	0	2	14	100
Command2	Cyclic	2	3	2	4	18	100

PROFIBUS Slave (Input/Output:24/0 bytes)

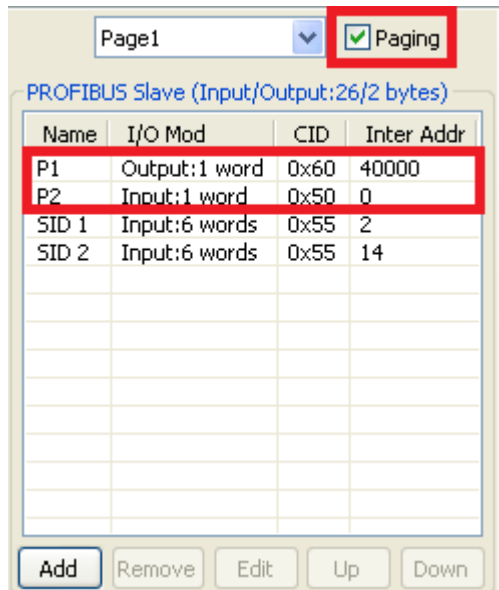
Name	I/O Mod	CID	Inter Addr
SID 1	Input:6 words	0x55	0
SID 2	Input:6 words	0x55	12

Add Remove Edit Clone Up Down

Add Remove Edit Up Down

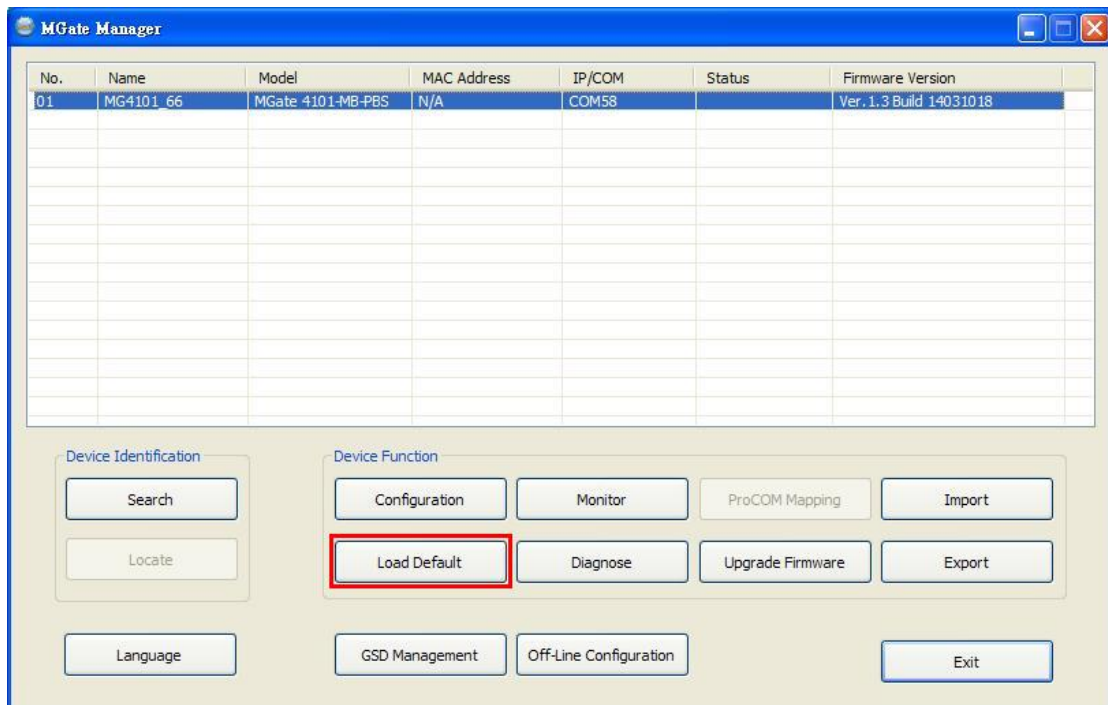
If you want to exchange data over 244 bytes, you can select the **Paging** checkbox to enable the page function, so the utility will insert two I/O word modules into the starting location of the input/output memory bank for separate page functionality. Basically, because one I/O module supports 244 bytes only, the paging function can be used to break through this limit. The maximum of input/output memory size is up to 7744 bytes respectively.

The output I/O module, which is called P1, is used to change the page number to the specified one. The first byte of module P1 attempts to switch input page number, and the second byte attempts to change output page number. In addition, the input I/O module, which is called P2, is used to read the current page number. The first byte of module P2 indicates input page number and the second one designates output page number. You can't modify these two I/O modules.

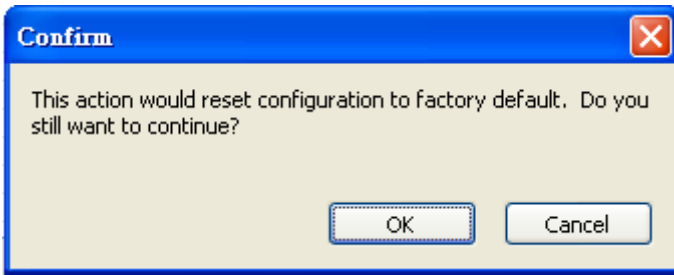


## Load Default

If for some reason you would like to clear all the settings of the unit, the **Load Default** button will reset the unit to its initial factory default values.



Click **Load Default** and review the confirmation message. If you are sure you would like to reset the configuration to the factory default, click the **OK** button. If not, click **Cancel**.



After MGate Manager resets completely, it will automatically execute a Broadcast Search for all MGate units on the LAN and the recording COM port. Your MGate should reappear in the list of units.

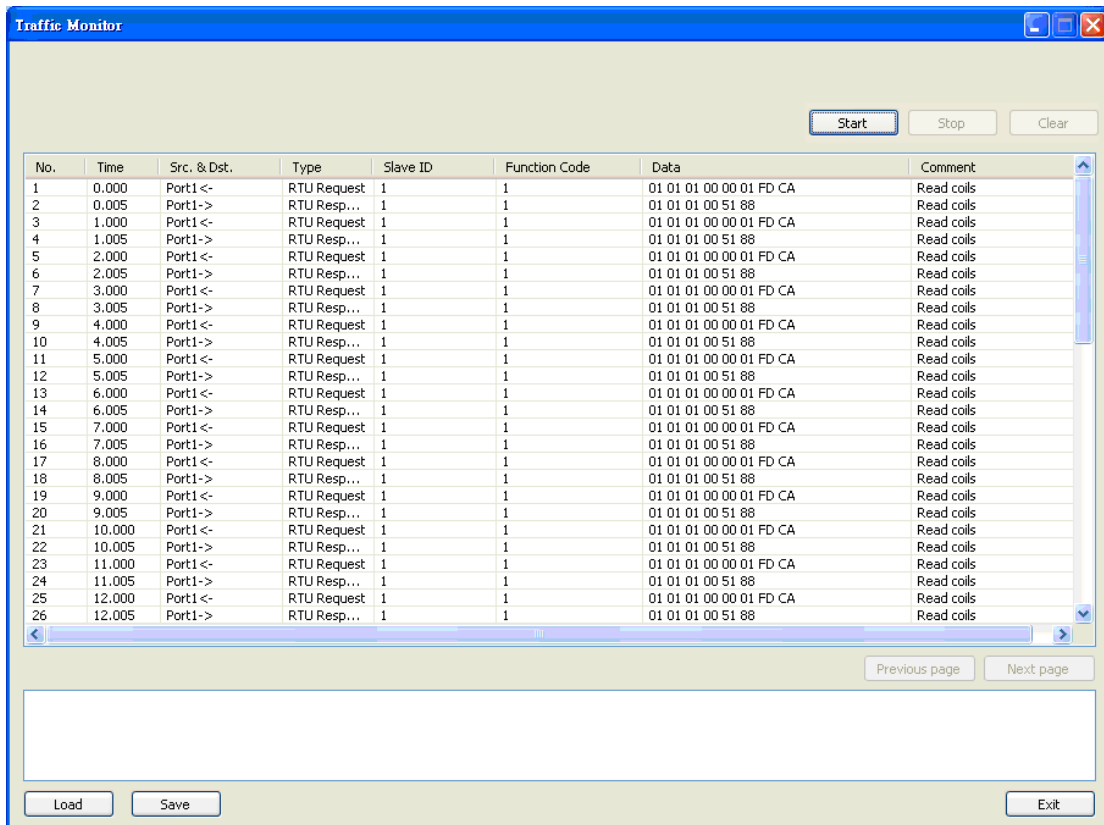


**ATTENTION**

**Load Default** will completely reset the configuration of the unit, and all of the parameters you have saved will be discarded. Do not use this function unless you are sure you want to completely reset your unit.

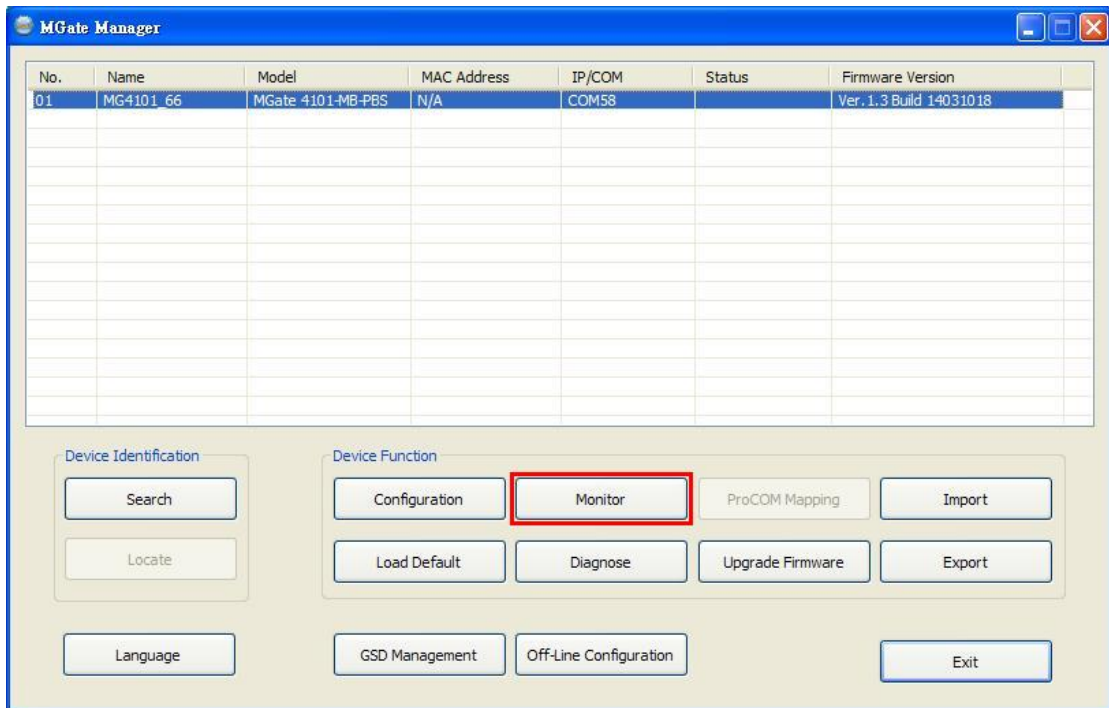
## Monitoring Modbus Activity

For troubleshooting or management purposes, you can monitor the data passing through any MGate 4101-MB-PBS on the Modbus side. Data events will be logged as they pass through the gateway. Rather than simply echoing the data, MGate Manager presents the data in an intelligent, easily understood format, with clearly designated fields including source, type, destination, contents, and more. Events can be filtered in different ways, and the complete log can be saved to a file for later analysis.

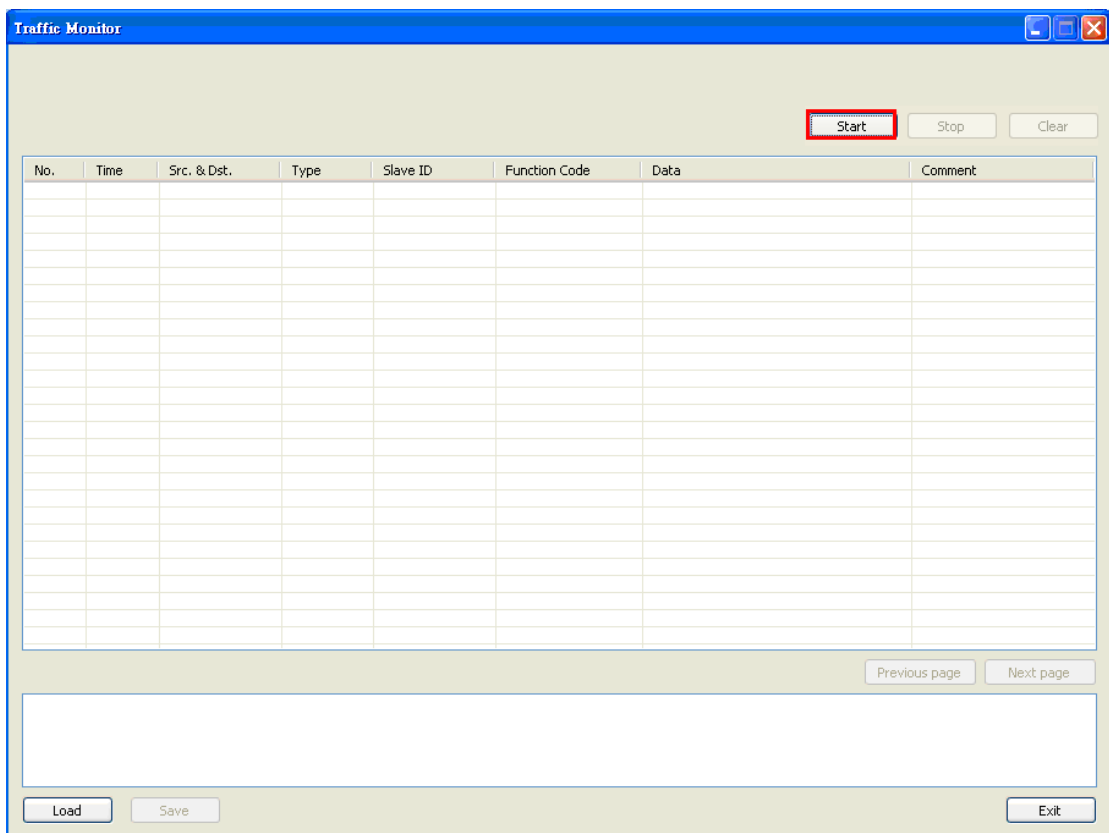


### Open Traffic Monitor Window

Select the unit that you wish to monitor and click **Monitor** to open the Traffic Monitor window.

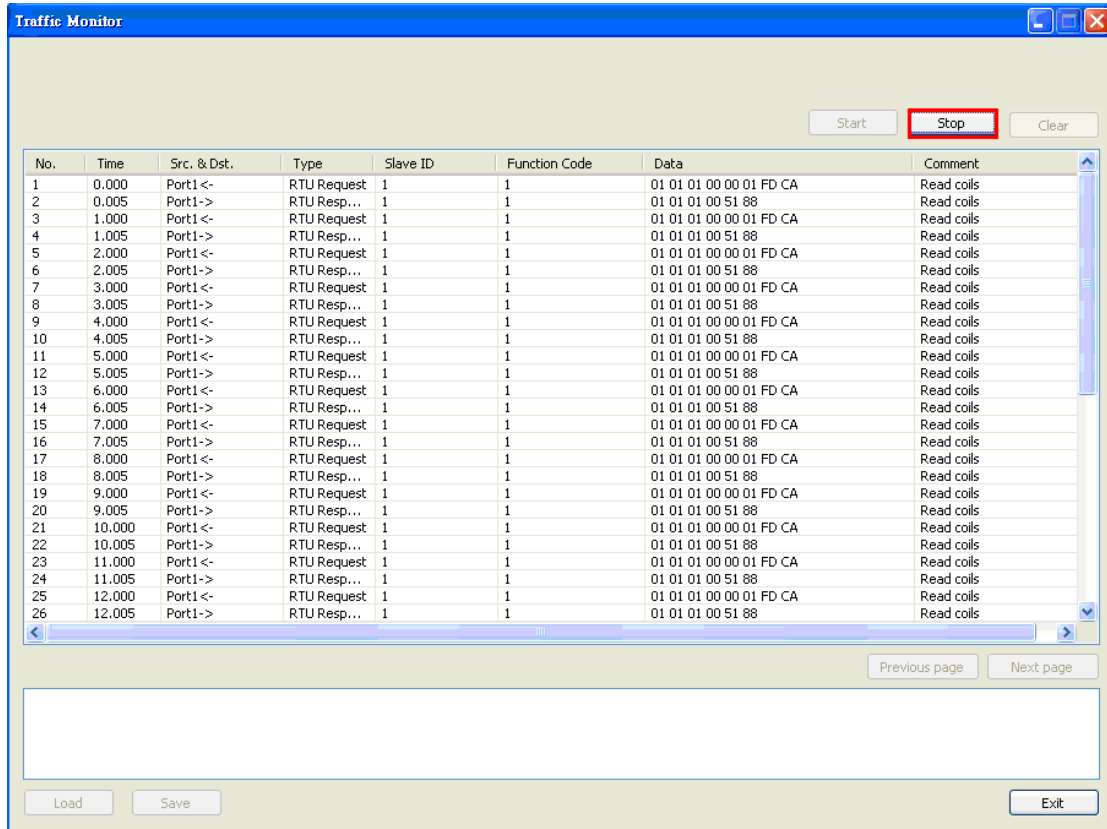


In the Traffic Monitor window, click **Start** to begin live monitoring of the data passing through the selected MGate 4101-MB-PBS unit.



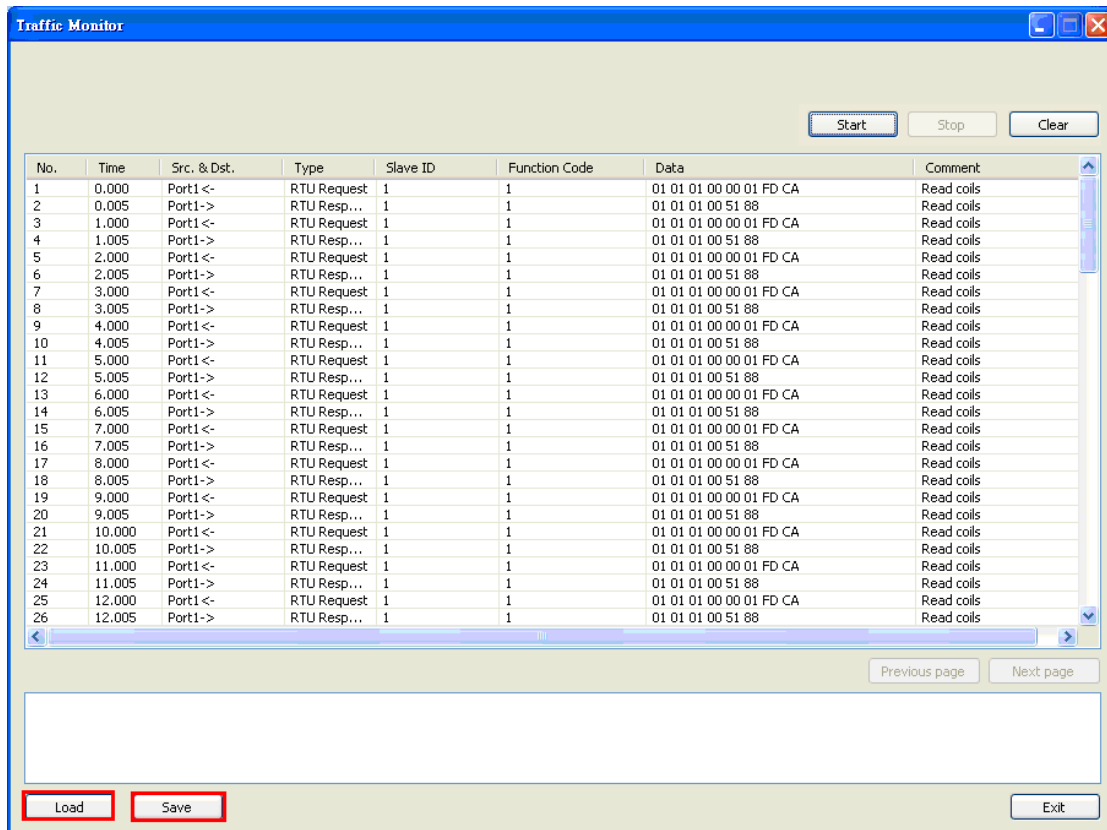


To stop capturing the log, press the **Stop** button.



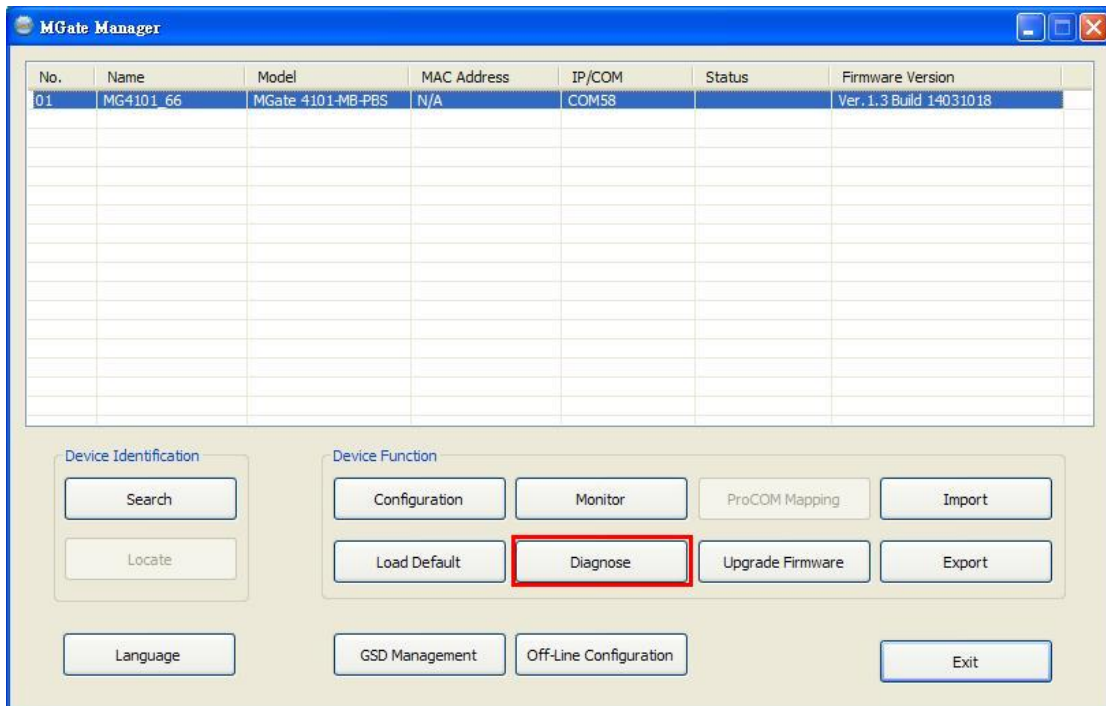
### Save Log to File

To save the data log to a file, click **Save**. You may retrieve a saved log by clicking **Load**.

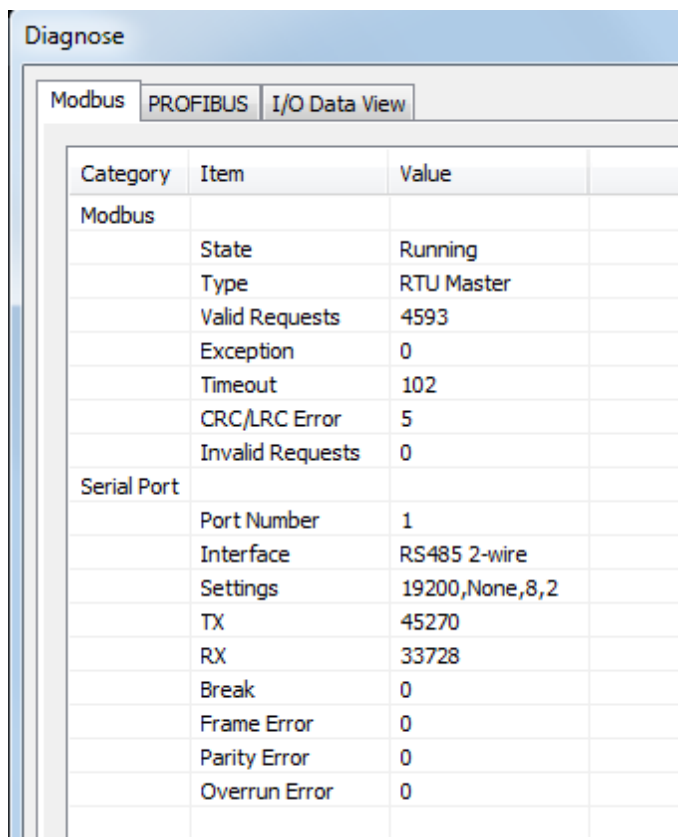


# Diagnose

**Diagnose** is a powerful function to identify communications problems and assist in troubleshooting when setting up a PROFIBUS and Modbus environment. Select the desired unit from the list in MGate Manager and click **Diagnose** to check the communication status.



The dialog box will show the details of the communication status of Modbus, PROFIBUS, and I/O Data View. In addition, it contains serial parameters.



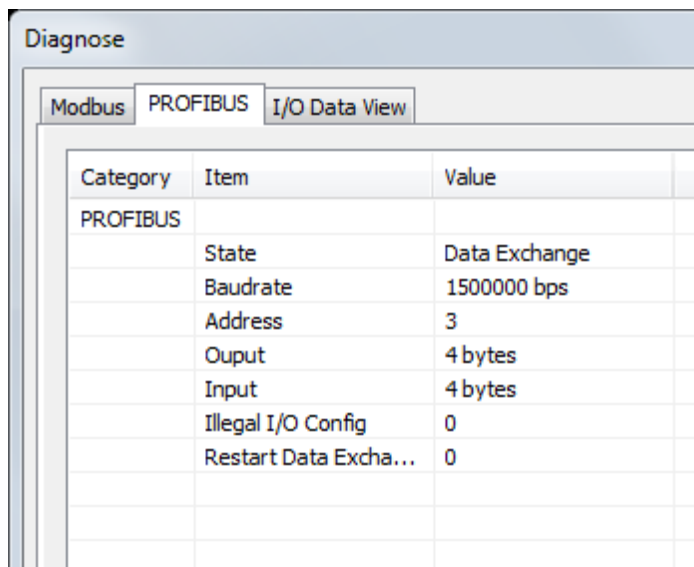
There are two parts. In Modbus tab, the first part is the information regarding Modbus. These details will help you to analyze the Modbus communication.

Modbus	Description
State	The communication state of Modbus side
Type	RTU Slave / RTU Master / ASCII Slave / ASCII Master
Slave ID	The Slave ID for Modbus
Valid Requests	The number of valid requests
Exception	The number of exceptions
Time-out	The number of time-outs
CRC/LRC Error	The number of CRC/LRC errors
Invalid Requests	The number of invalid requests

The second part is the serial parameters. It includes the serial communication about this serial port

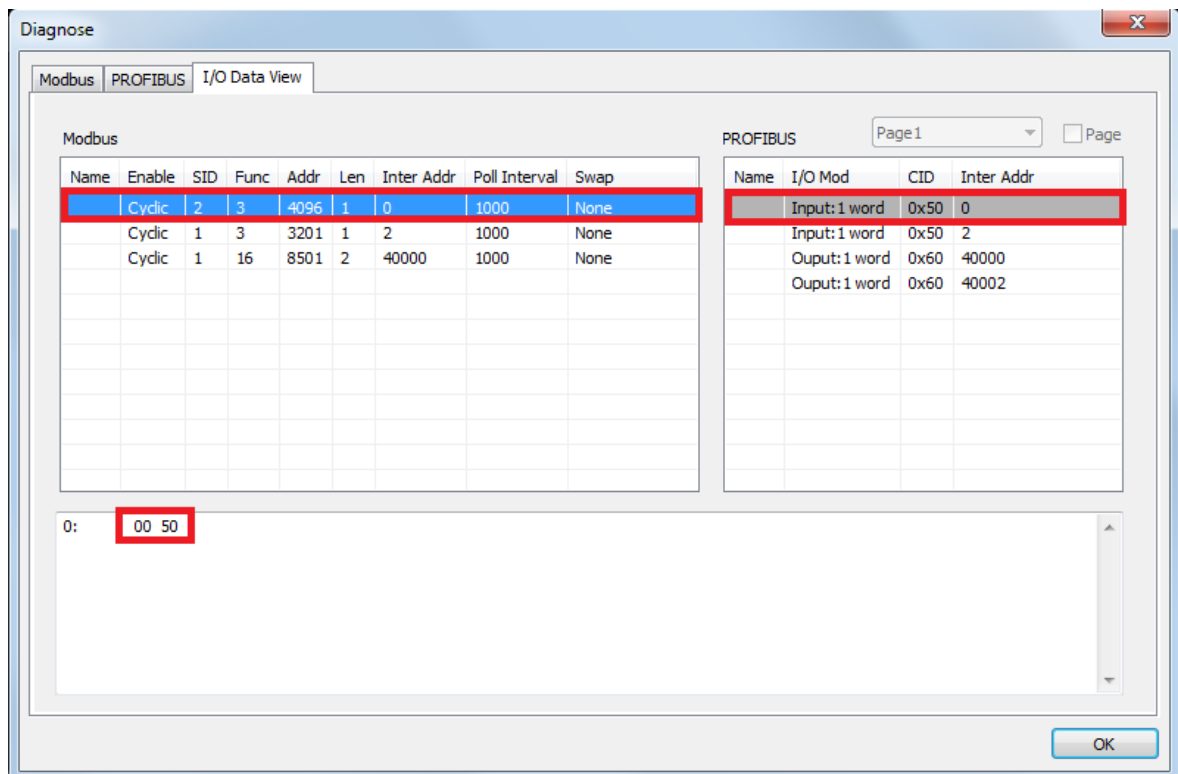
Serial Port	Description
Port Number	The serial port number
Interface	The serial interface, RS-232/RS-422/RS-485-2w/RS-485-4w
Settings	The parameter includes baudrate, parity, start bit and stop bit, for example, 19200, None, 8, 1
Tx	The transmission count
Rx	The reception count
Break	The number of break signals
Frame Error	The number of frame errors
Parity Error	The number of parity errors
Overrun Error	The number of overrun errors

The PROFIBUS tab has information about the PROFIBUS status



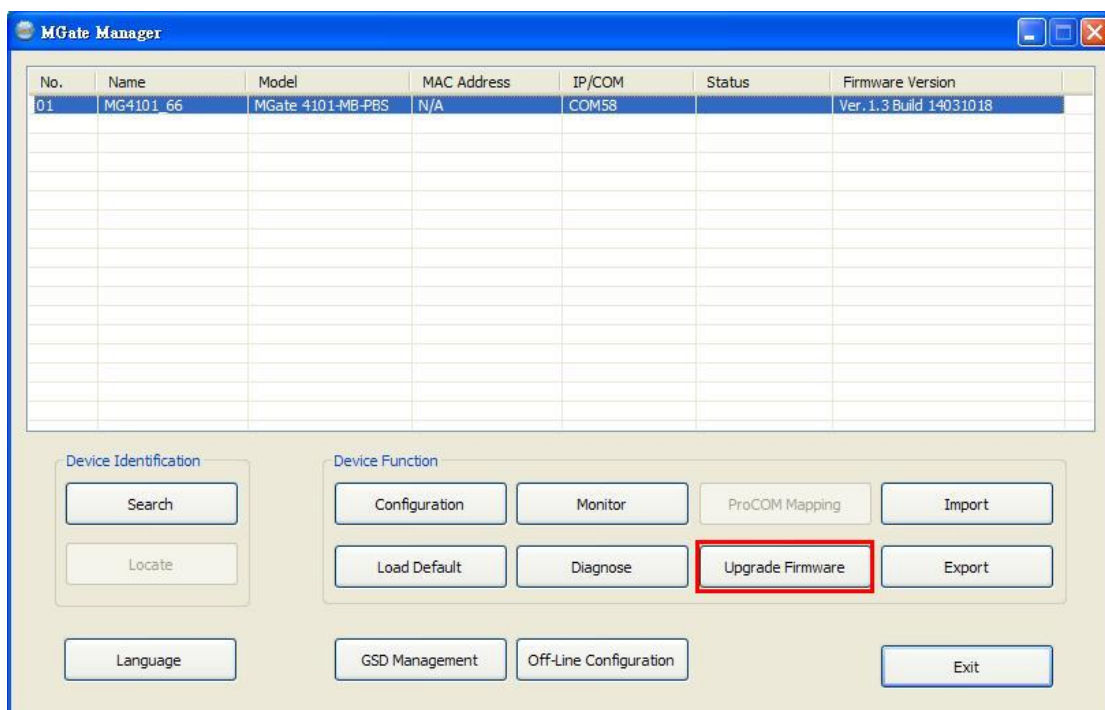
PROFIBUS	Description
State	The communication state of PROFIBUS side
Baudrate	The baudrate of PROFIBUS side
Address	The PROFIBUS segment ID
Output	The output bytes
Input	The input bytes
Illegal I/O Config	The number of illegal I/O configurations
Restart Data Exchange	The number of restarted data exchanges

The I/O Data View tab is designed to check all exchanging data in MGate's internal memory. Select **PROFIBUS I/O module/Modbus** command to obtain the correct data.

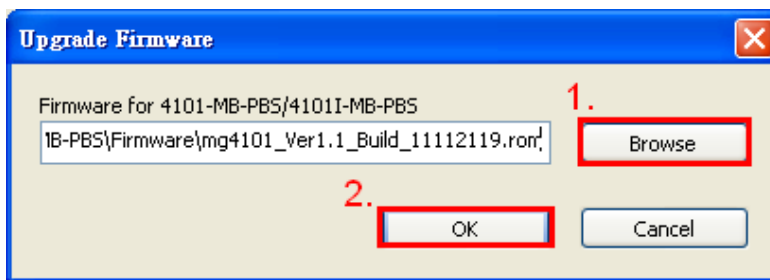


## Upgrading Firmware

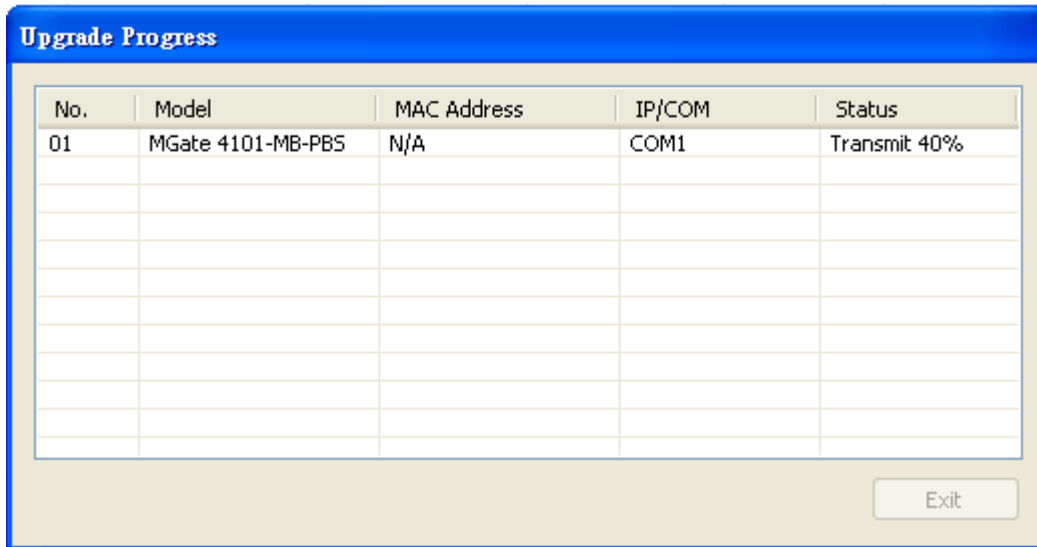
Firmware updates for the MGate 4101-MB-PBS are located at [www.moxa.com](http://www.moxa.com). After you have downloaded the new firmware onto your PC, you can use MGate Manager to write it onto your MGate 4101-MB-PBS. Select the desired unit from the list in MGate Manager and click **Upgrade Firmware** to begin the process.



The dialog boxes will guide you through the process. You will need to browse your PC for the firmware file. Make sure that it matches your model.



As the firmware is written to the unit, progress is displayed in the window.



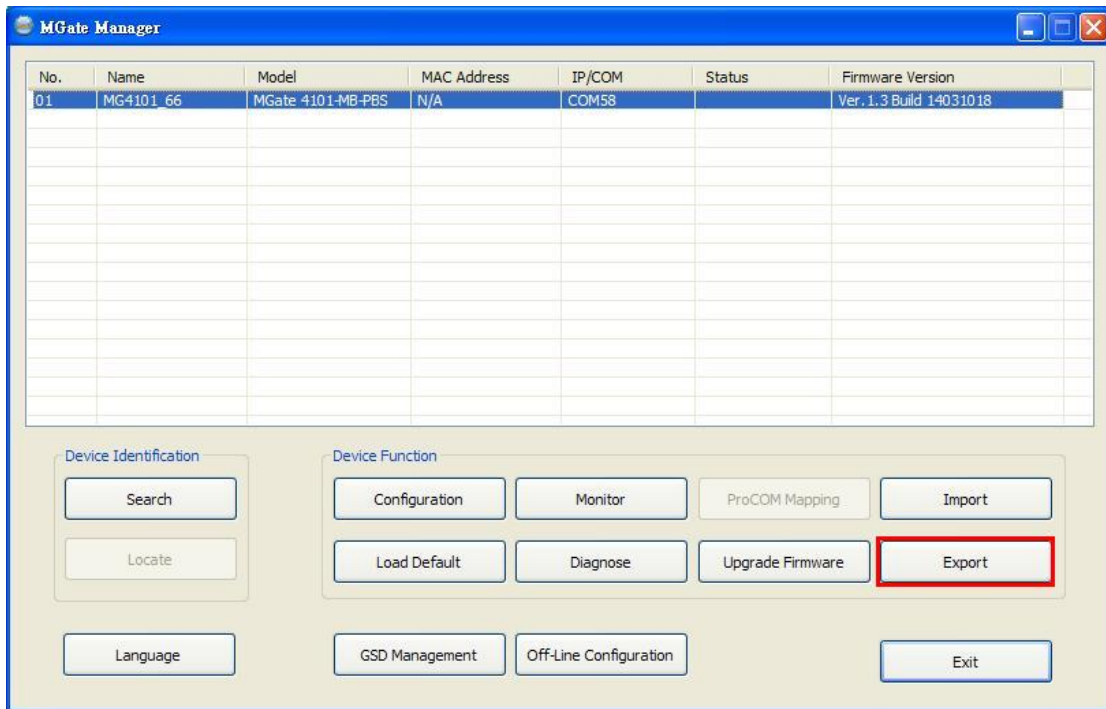
Once the firmware has been successfully written onto the unit, click **Exit** to close the Upgrade Firmware window. MGate Manager will automatically execute a Broadcast Search for all MGate units on the LAN and the recording COM port. Your MGate should reappear in the list of units.

## Import/Export

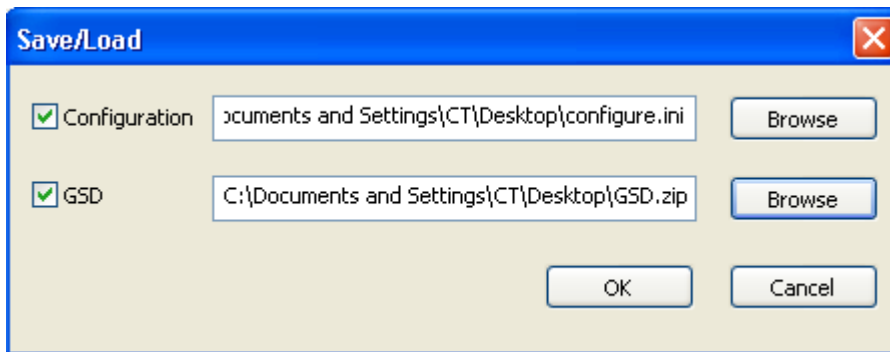
The Import/Export configuration function is a convenient way to apply the same settings to units which are located in different sites. You can export the configuration as a file, and then import that configuration file onto other units at any time.

The export function saves all the configuration settings and parameters of the MGate 4101-MB-PBS will be saved in an .INI file format. Furthermore, you also can save a GSD file with all I/O module settings in a .zip file.

To begin, click the **Export** button.



Type in a file name and use the **Browse** button to set the save file to a specific path. Then, click the **OK** button.



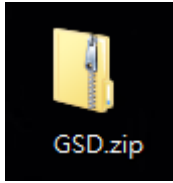
If you export the configuration/GSD file successfully, a confirmation message will pop up.



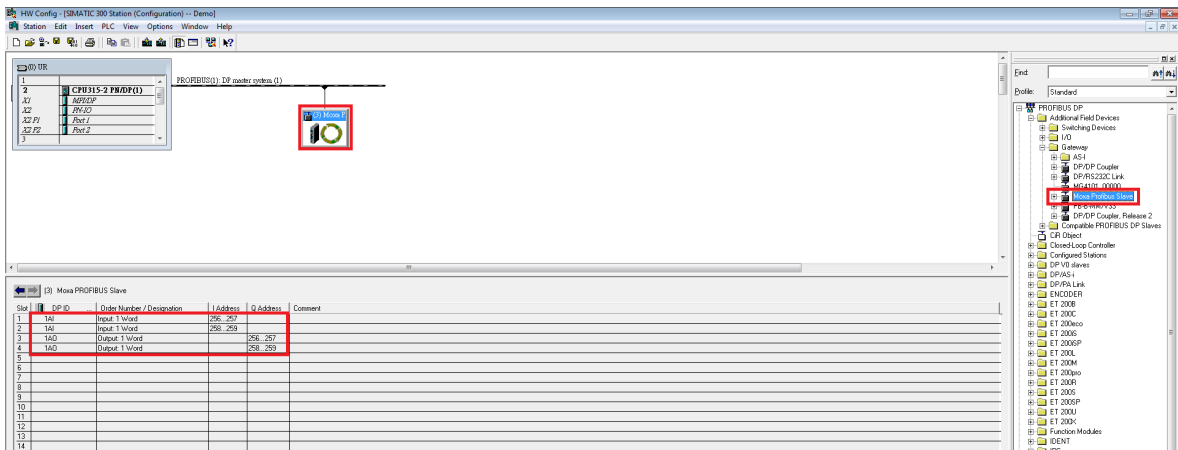
After that, the configuration file will be saved as an .INI file



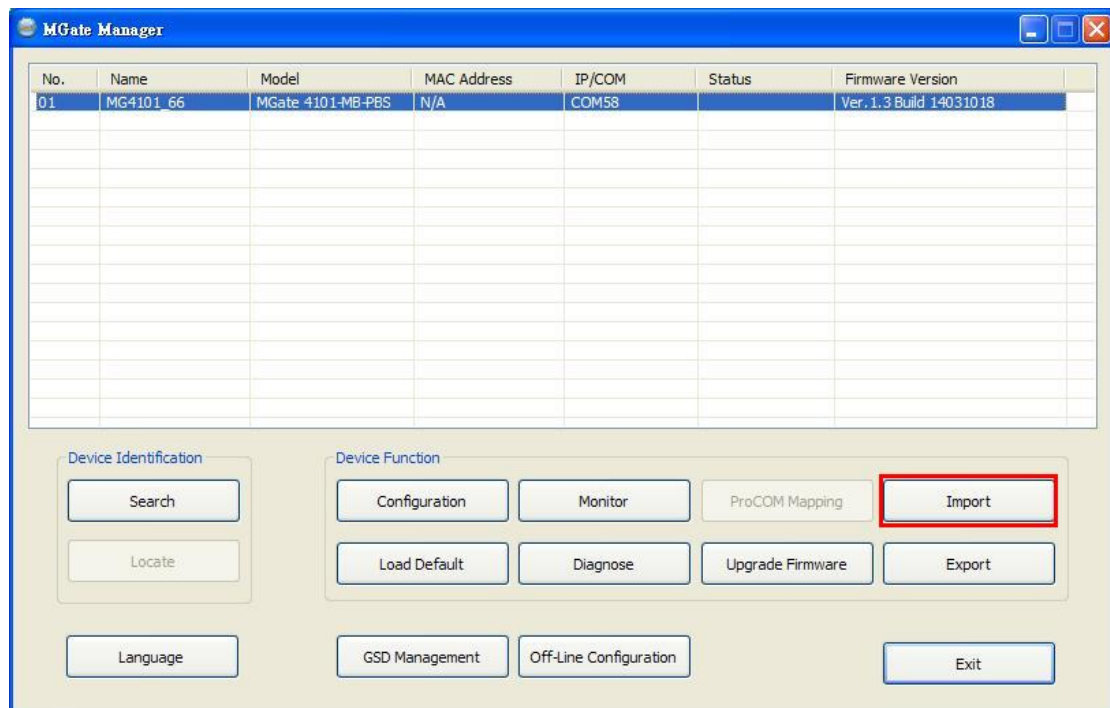
The GSD file will be saved as a .zip file.



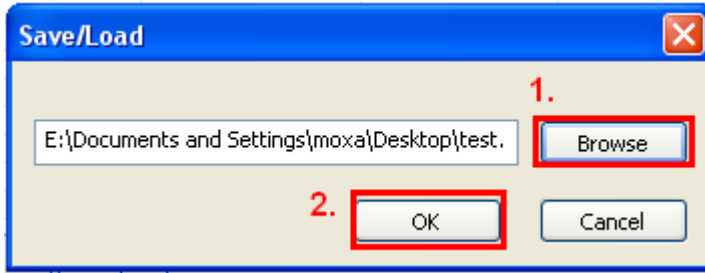
The exported GSD file is used for easy configuration when setting PLC. Typically, users waste lots of time in importing MGate 4101 general GSD files and then set the I/O modules respectively. If we import the specified GSD coming from MGate 4101, a user just needs to pull the module to the PROFIBUS system. Then the I/O modules will be set and you can run the communication. It is an easy and efficient way in PLC configuration.



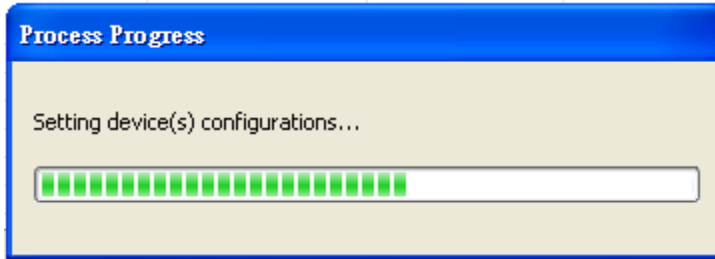
Once the file is saved, it can be imported into your target unit to duplicate the same settings. Select the target unit first and click the **Import** button to import.



Select the file you want to import, then click the **OK** button



Please be patient and wait as MGate Manager configures the target device.



If you import the configuration file successfully, a confirmation message will pop up.

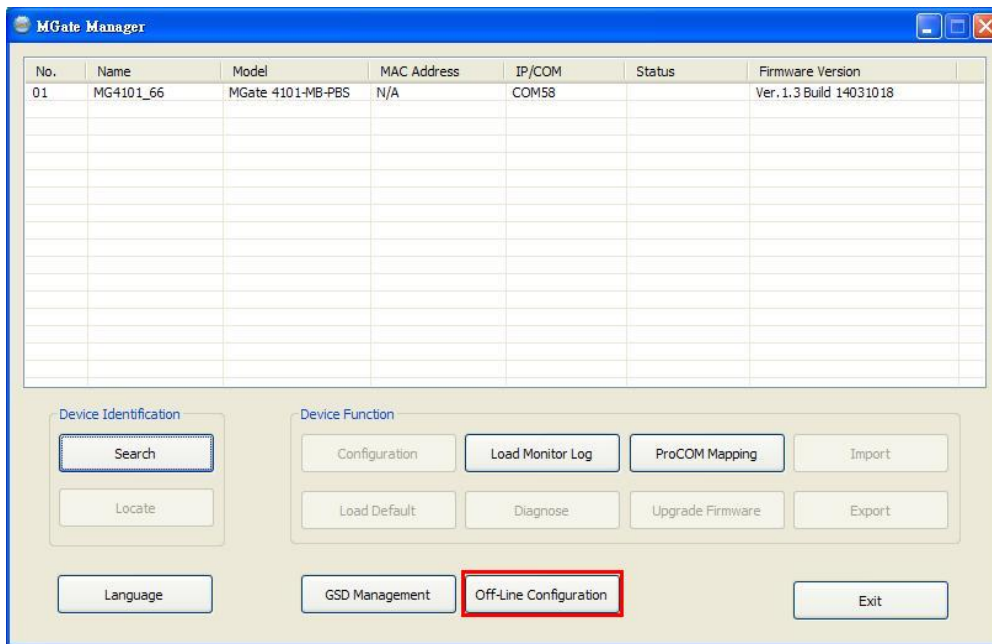


After closing the message dialog box, MGate Manager will automatically execute a Broadcast Search for all MGate units on the LAN and the recording COM port. Your MGate should reappear in the list of units.

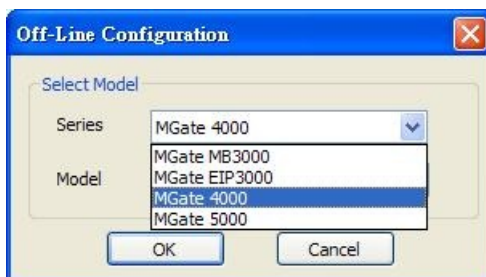


# Off-Line Configuration

Users can create or modify the configuration file manually through MGate Manager. To use this function, users can click on the **Off-Line Configuration** button to load the configuration window.



A dialog box will appear. Choose the correct model and series. Click the **OK** button for the desired MGate device to proceed to the next step.

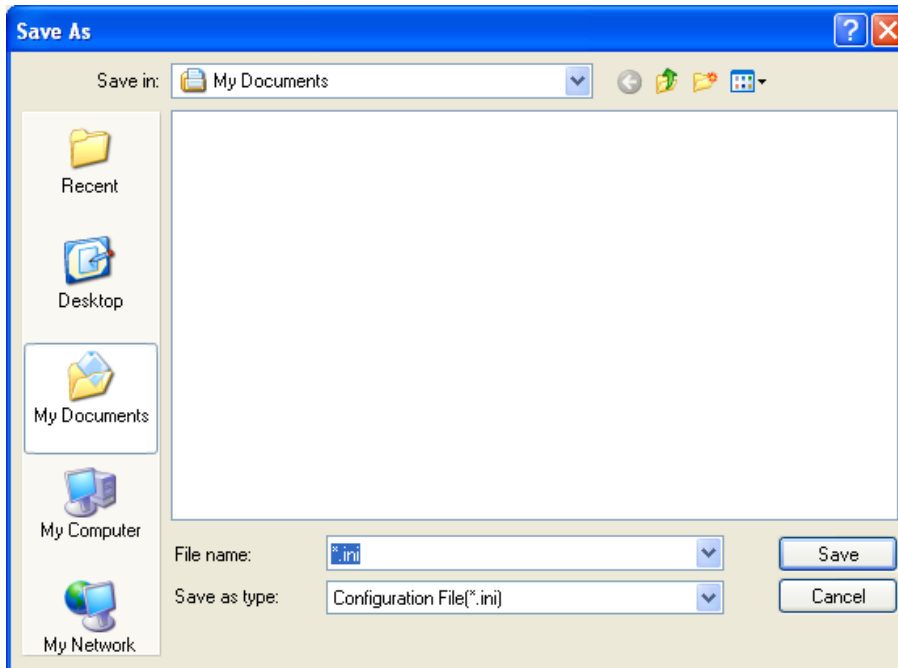


Users can choose "Create new configuration" or "Load existing configuration" to create or modify configurations.



By choosing "create new configuration," users can set each functions as online setting. Refer to the **Modifying the Configuration** section for detailed information. When all configurations are finished, click **OK** to update or store the configuration file.

A dialog box to store the configuration file as \*.INI file is displayed.



The file for "Load existing configuration" can be generated from the **Export** function, or loaded from the file stored when "Create new configuration."

# A

## Quick Configuration

---

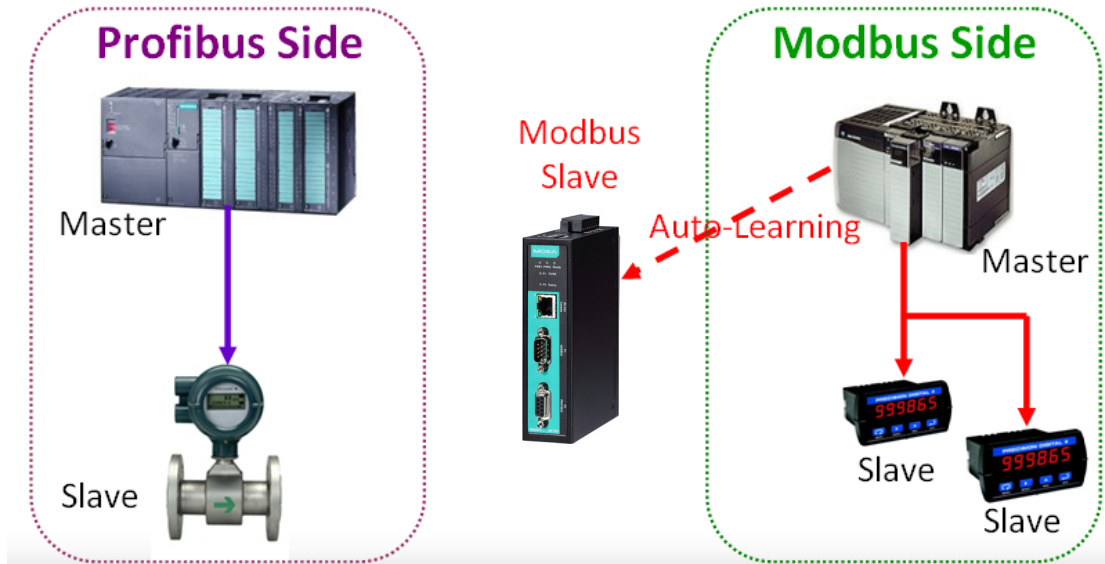
The following topics are covered in this appendix:

- **Typical Applications**
- **Quick Configuration Steps**
- **PROFIBUS Overview**
- **Modbus Overview**
- **Diagnose Packet Format**

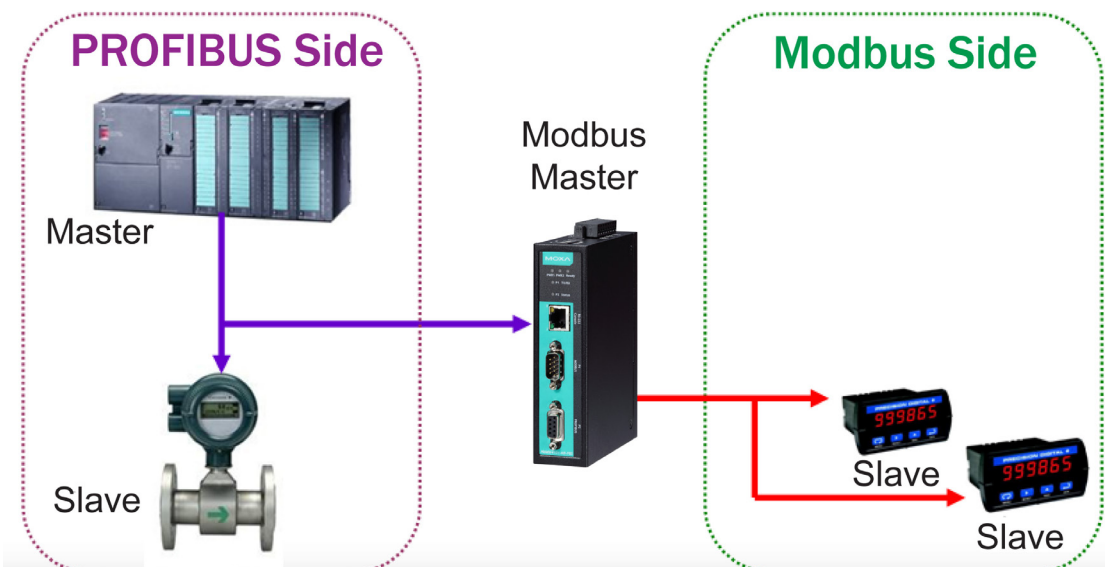
# Typical Applications

Here is a typical application to demonstrate how to use the **Quick Link** function and explain how QuickLink works.

First, we are assuming a legacy Modbus master is in the original application, and the Modbus master is running. After MGate 4101-MB-PBS connects to the Modbus master, the MGate 4101-MB-PBS acts as a Modbus slave to learn Modbus requests from the master automatically.



After some time, MGate 4101-MB-PBS will fully learn the requests from the Modbus master. Through this QuickLink process, the MGate 4101-MB-PBS can replace the legacy Modbus master. Moreover, the MGate 4101-MB-PBS can respond to all of the Modbus slaves correctly.

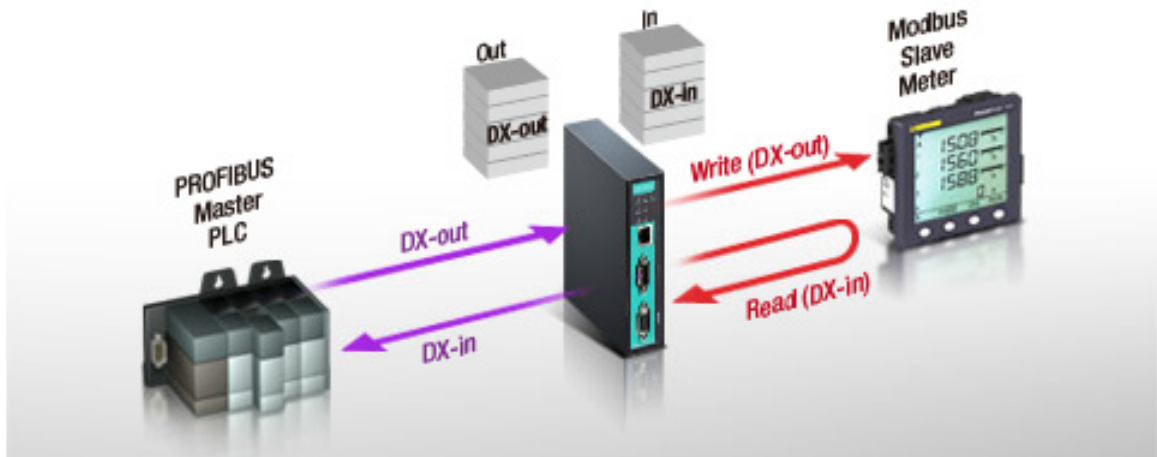


**NOTE** QuickLink is enabled with the MGate 4101-MB-PBS is in master mode only. Please set the MGate 4101-MB-PBS in master mode before you use the QuickLink function.

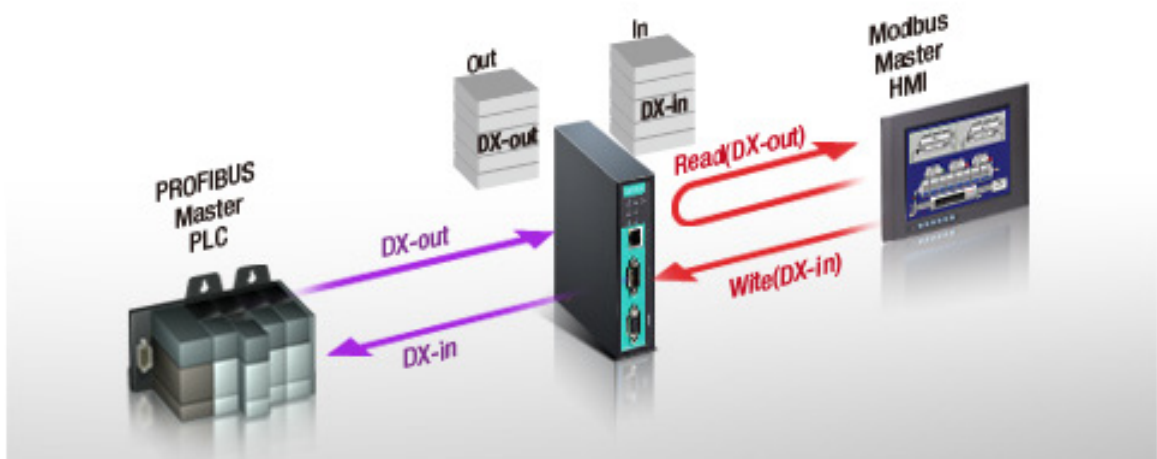
# Quick Configuration Steps

MGate 4101-MB-PBS provides an innovative function which can automatically and quickly finish the configuration. Two typical architectures are illustrated below. Confirm which architecture is used in your application and then follow the steps to finish the configuration.

## MGate 4101 is Modbus Master



## MGate 4101 is Modbus Slave



# PROFIBUS Overview

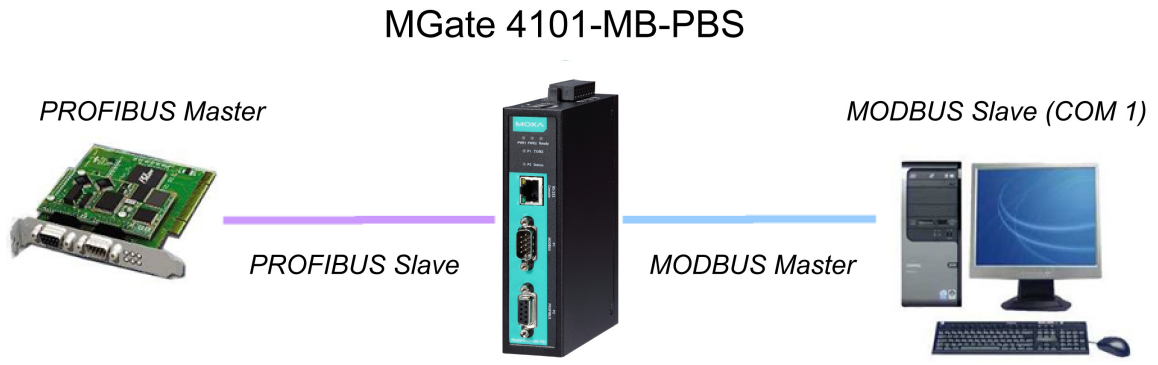
## Introduction

PROFIBUS (Process Field Bus) is a standard for fieldbus communication in automation technology and was first promoted in 1989 by BMBF (German department of education and research).

**Topology**

PROFIBUS uses the bus topology. In this topology, a central line, or bus, is wired throughout the system. Devices are attached to this central bus. One bus eliminates the need for a full-length line going from the central controller to each individual device.

In the past, each PROFIBUS device had to connect directly to the central bus. Technological advancements, however, have made it possible for a new “two-wire” system. In this way, multiple PROFIBUS buses can connect to each other.



**Modbus Overview**

**Introduction**

Modbus is one of the most popular automation protocols in the world. It supports both serial and Ethernet devices. Many industrial devices, such as PLCs, DCSs, HMIs, instruments, meters, motors, and drivers, use Modbus as their communication standard.

**Devices are Either Masters or Slaves**

All Modbus devices are classified as either a master or a slave. Masters initiate all communication with slaves and do not communicate with other masters. Slaves are completely passive and communicate only by sending a response to a master’s request.



**Slaves are Identified by ID**

Each Modbus slave in a system is assigned a unique ID between 1 and 247. Whenever a master makes a request, the request must include the ID of the intended recipient. Master devices themselves have no ID.

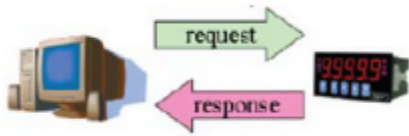
0	1~247	248~255
Broadcast address	Slave individual address	Reserved

**Communication is by Request and Response**

All Modbus communication is by request and response. A master sends a request, and a slave sends a response. The master will wait for the slave’s response before sending the next request. For broadcast commands, no response is expected. This is illustrated by the following scenarios:

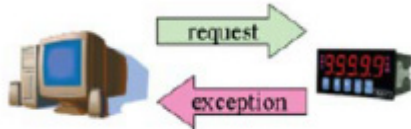
**Normal**

The master sends a request to the slave. The slave responds with the requested information.



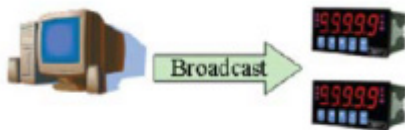
**Exception**

The master sends a request to the slave. The slave may not support the command or an error is detected, so it sends an exception to the master.



**Broadcast**

The master sends a broadcast command, such as a reset command. Every slave on the network complies with the command, and no response is sent to the master.



**Requests Need a Time Limit**

The original Modbus protocol was not designed for simultaneous requests, so only one request on the network can be handled at a time. When a master sends a request to a slave, no other communication may be initiated until after the slave responds. The Modbus protocol specifies that masters use a response timeout function to identify when a slave is nonresponsive due to device or line failure. This function allows a master to give up on a request if no response is received within a certain amount of time. This is illustrated as follows:

**Response Timeout**

The master sends a request. The slave is unresponsive for the amount of time specified by the response timeout function. The master gives up on the request and resumes operation, allowing another request to be initiated.



To allow for a wide range of devices, baudrates, and line conditions, actual response timeout values are left open for manufacturers to determine. This allows the Modbus protocol to accommodate a wide range of devices and systems. However, this also makes it difficult for system integrators to know what response timeout value to use during configuration, especially with older or proprietary devices.

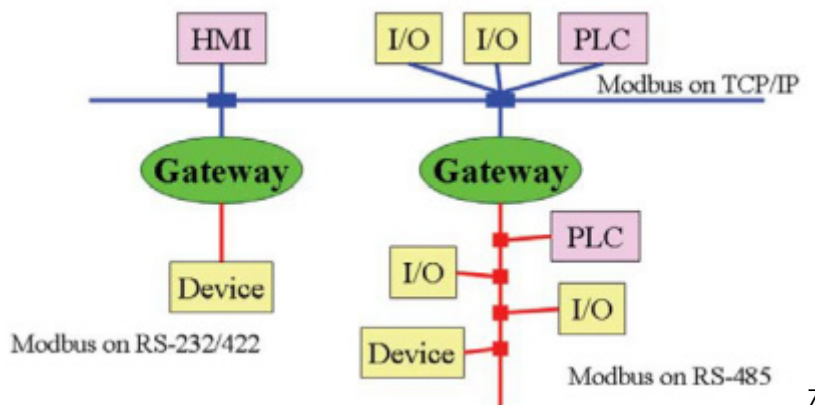
The MGate MB3000 provides a patent-pending function that tests all attached devices and recommends a response timeout value. This function saves considerable time and effort for system integrators, and it results in more accurate timeout settings.

### Modbus Ethernet vs. Modbus Serial

Although Modbus is intended as an application layer messaging protocol, the data format and communication rules for Ethernet-based Modbus TCP are different from serial-based Modbus ASCII and RTU.

The major difference between the Ethernet and serial Modbus protocols is the behavior of the communication model. Modbus ASCII and RTU allow only one request on the network at a time. Once a request is sent, no other communication on the bus is allowed until the slave sends a response, or until the request times out. However, Modbus TCP allows simultaneous requests on the network, from multiple masters to multiple slaves. TCP masters cannot send more than one request at a time to a slave, but they can send requests to other slaves before a response is received. The Modbus TCP standard recommends that slaves be able to queue up to 16 requests at a time. The MGate MB3000 will queue up to 32 requests from each TCP master, for up to 16 TCP masters.

### Integrate Modbus Serial and Ethernet with Gateways



Ordinarily, Modbus TCP and Modbus ASCII/RTU are unable to communicate with each other.

However, with a Modbus gateway in between the Modbus serial network and the Modbus Ethernet network, TCP masters are able to communicate with serial slaves and serial masters are able to communicate with TCP slaves.

## Diagnose Packet Format

When the communication of MGate works well between PROFIBUS and Modbus protocols, MGate won't go into diagnostic mode. However, if there is an error in the Modbus connection, for example, a disconnection or no responses, the MGate will continue to send polling requests until three requests are sent without response. Then, it will enter diagnostic mode. In this mode, the MGate will send diagnose packets periodically. Upon receiving the correct response, MGate will go back to normal operations.

Refer to the diagnose packet format table to help identify why the MGate entered diagnostic mode.

Byte	Parameter	Notes
1	Length	The length of diagnose packet
2	Page number	The paging number which the problem data locates
3	Module	The PROFIBUS IO module number which the problem data locates

For instance, if the diagnose packet is 03 01 03, that means the problem data is located on the third PROFIBUS IO module in page one. Using this information, you can check if the location of the internal memory is correct.